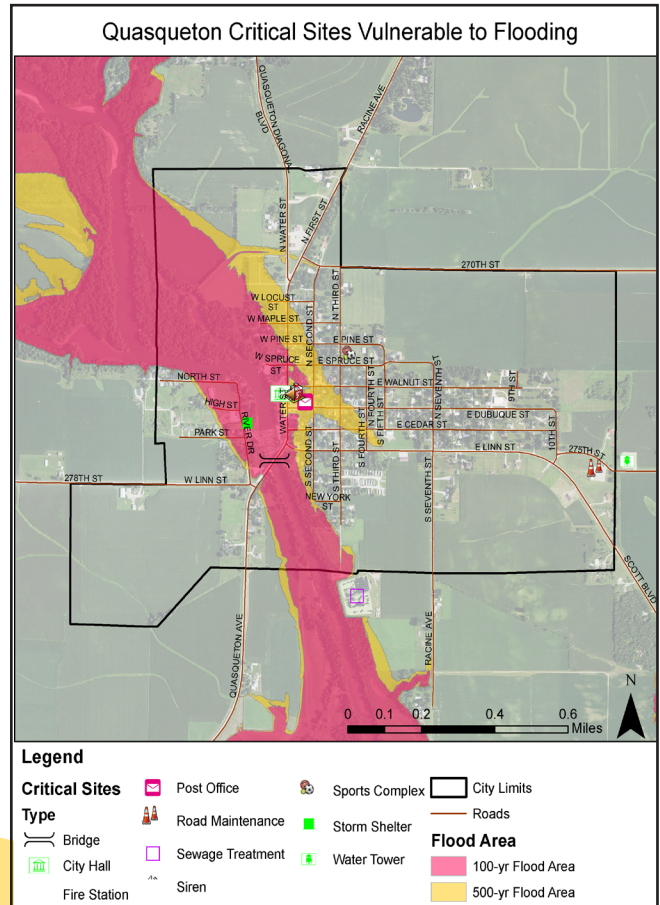
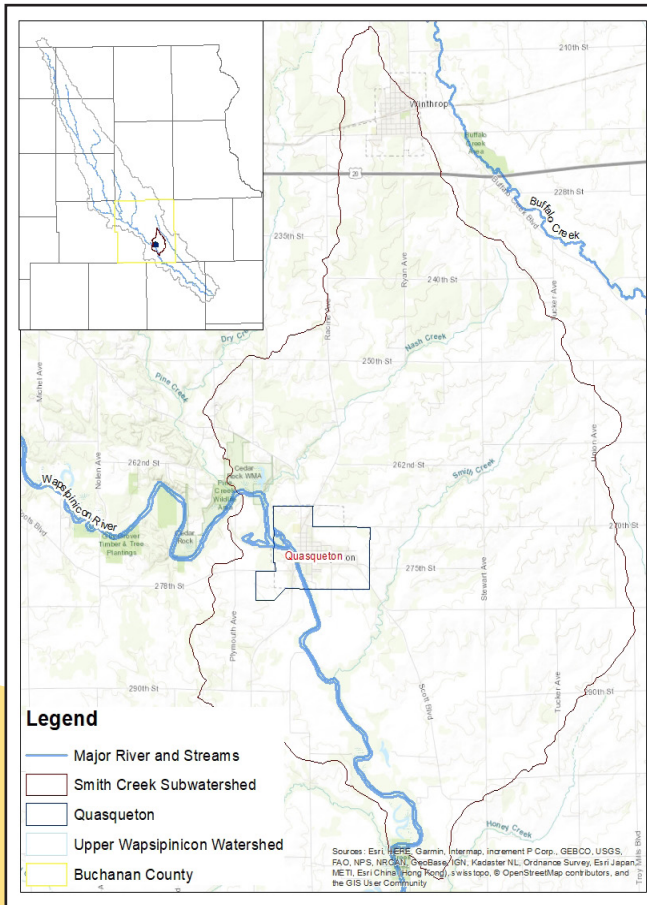


Quasqueton Flood Resilience Action Plan: WHY DOES THE CITY FLOOD?

understanding flooding in Quasky



The region of northeast Iowa, including the city of Quasqueton, has been largely affected by flooding during the last several decades. This is because the landscape of the Upper Wapsipinicon River Watershed has changed drastically over the last century.

The city of Quasqueton, locally known as Quasky, is located within the Upper Wapsipinicon River Watershed, in the subwatershed of Smith Creek. A watershed is a land entity that encompasses all land areas from which water flows into a common body of water.

Quasky is surrounded by hundreds of acres of conventional agricultural land. Conventional cropland tends to have less developed root systems than that of native perennial vegetation, and as such, a lessened

ability to retain water within the soil. As a result, the amount of water flowing over the land and into the city greatly increases during a major rainfall event.

As climate scientists predict an increase in rainfall intensity and frequency over the next 50 years, the threat of flooding increases as well. To protect residents and their assets, the city officials are partnering with local organizations to develop the Quasqueton Flood Resilience Action Plan.

