

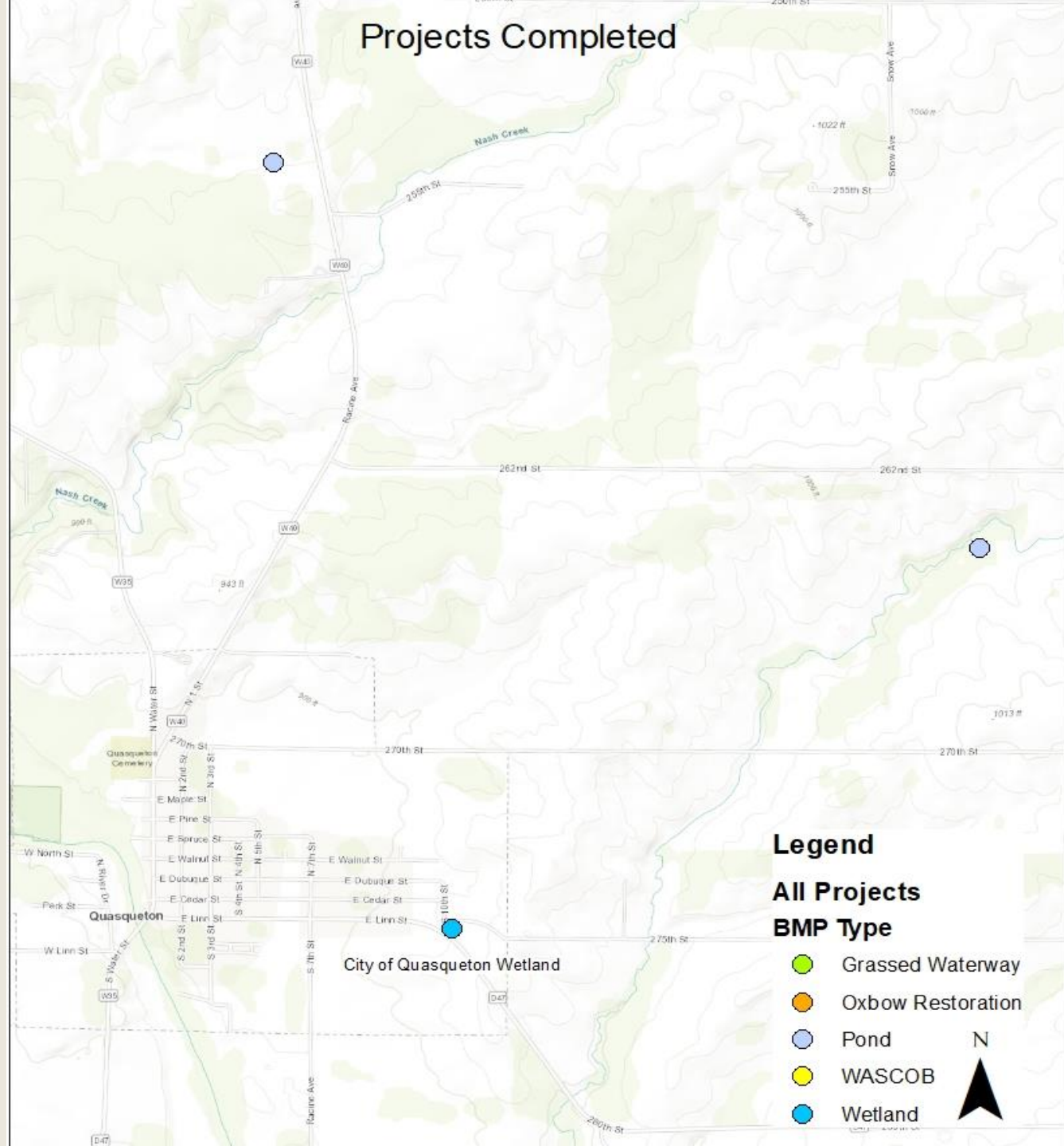
# PROJECT COORDINATOR UPDATE

Tori Nimrod and Ross Evelsizer

# IWA Project Implementation

## Completed Projects:

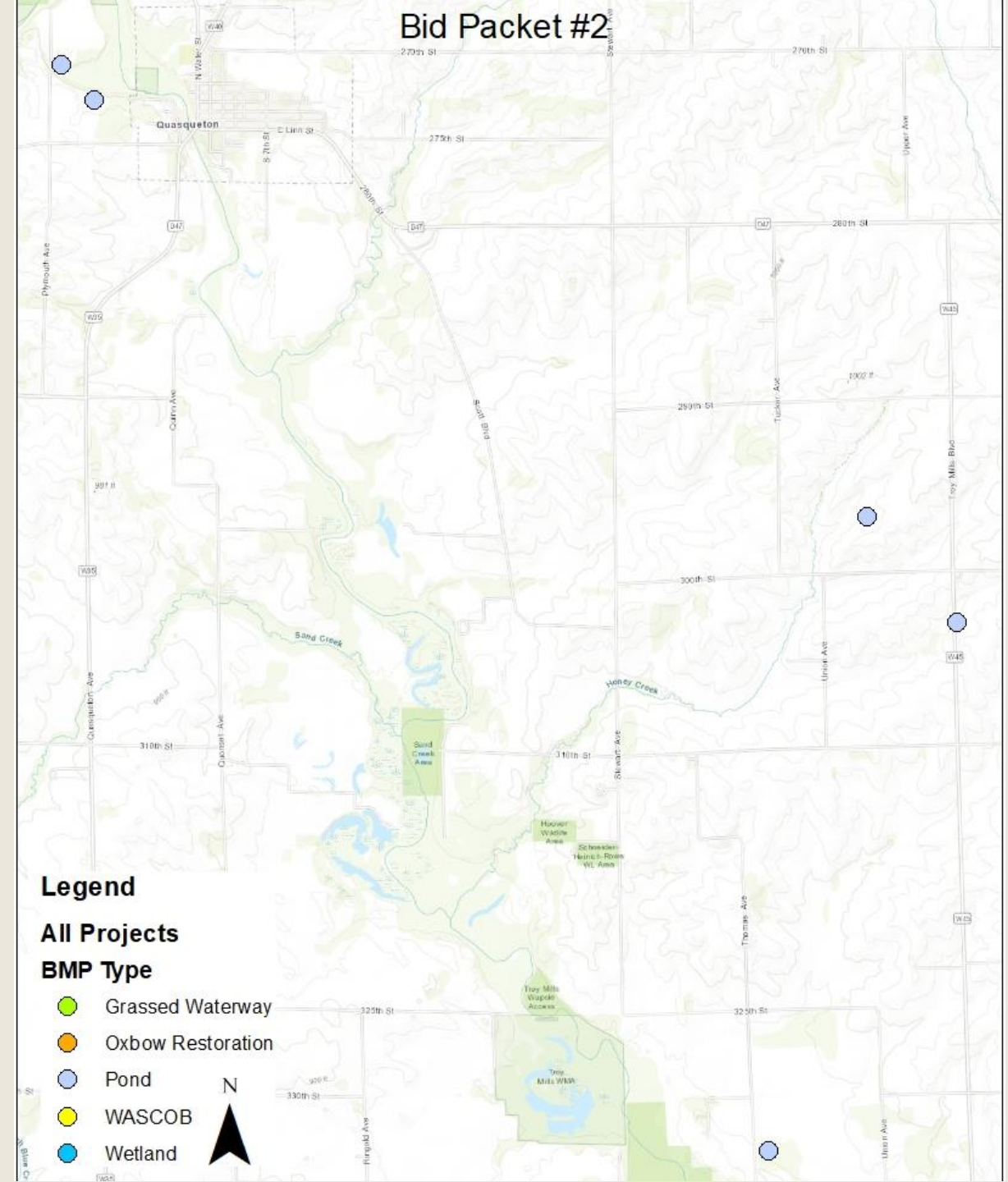
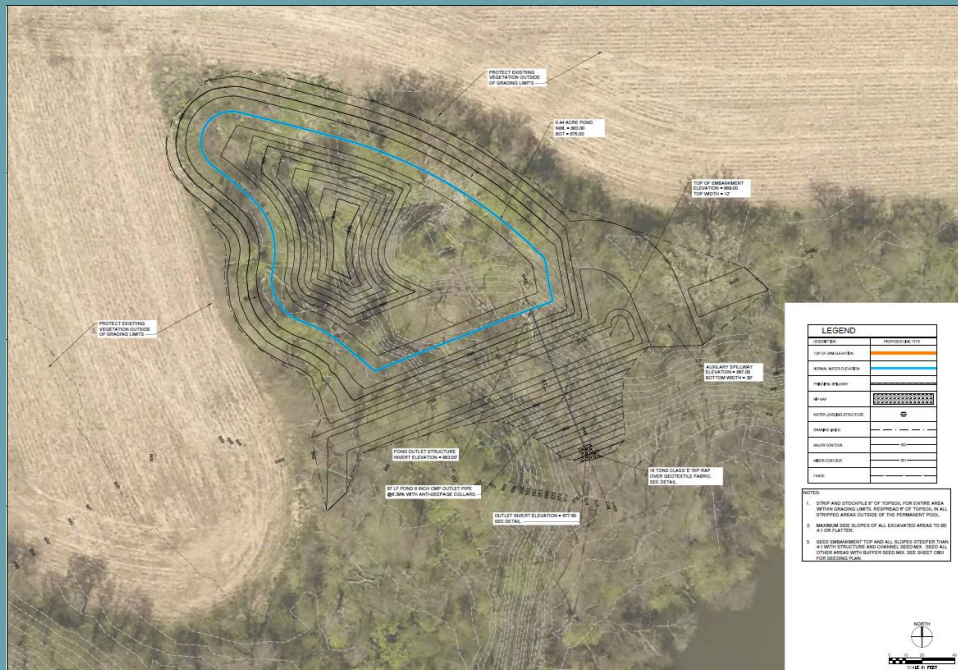
- City of Quasqueton wetland
- 2 Private Landowner Ponds
- Estimated \$112,000





# Bid Packet #2

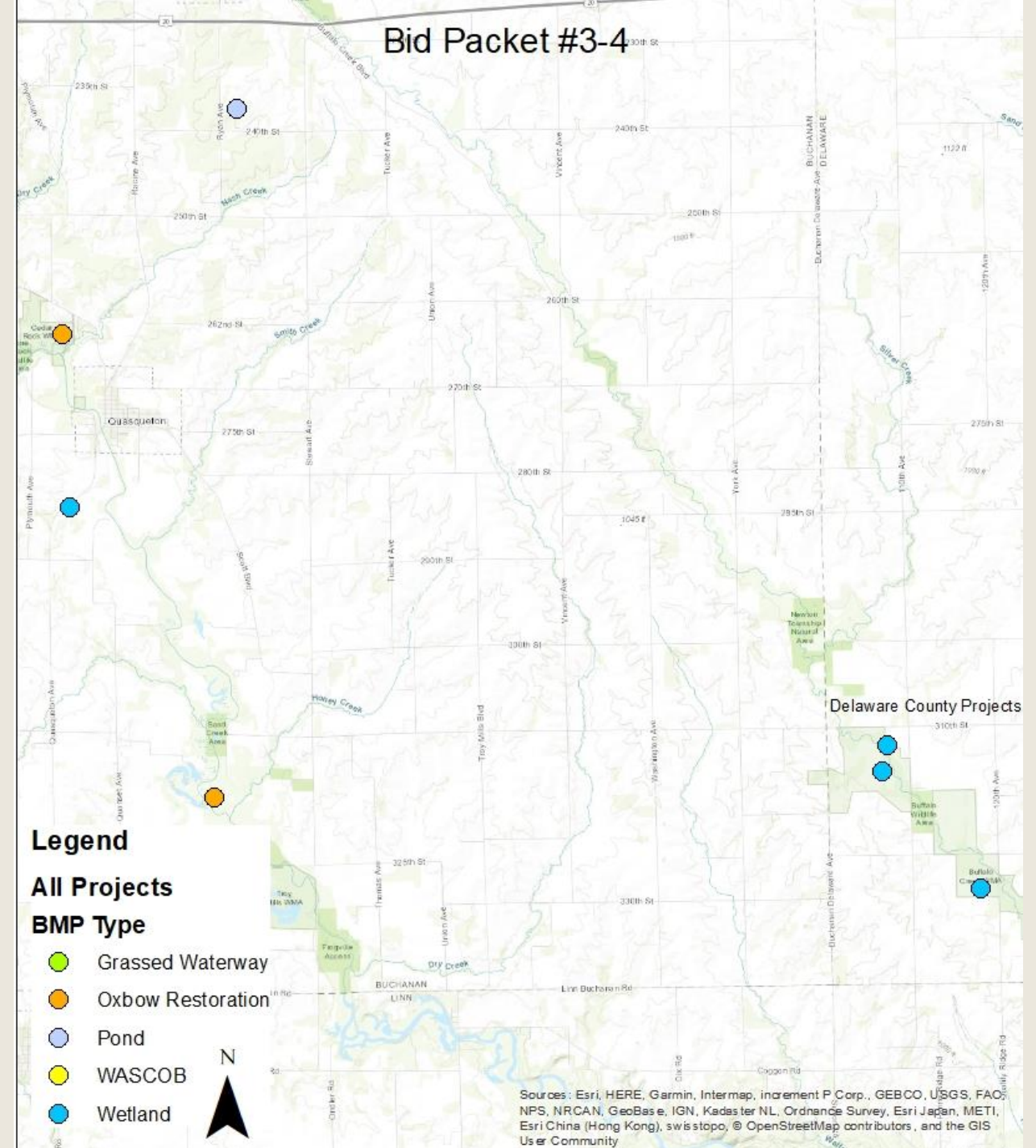
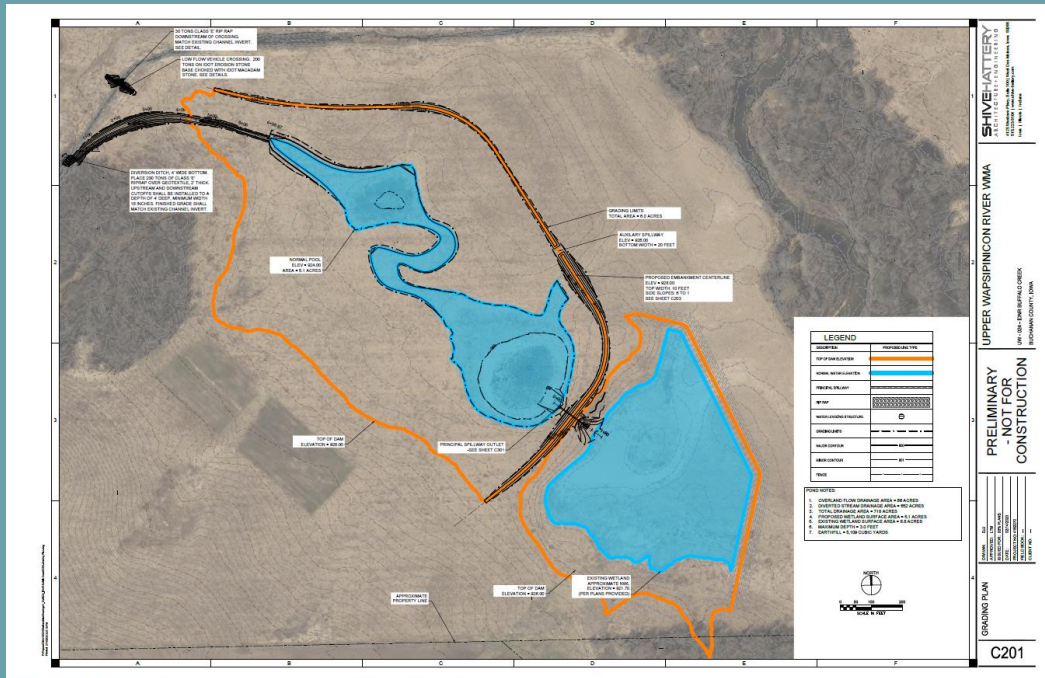
- 5 pond projects with private landowners
- Bid awarded to German Enterprises LLC in late July
- Bid amount: \$132,763
- Fall 2020-Spring 2021 Construction





# Bid Packet #3-4

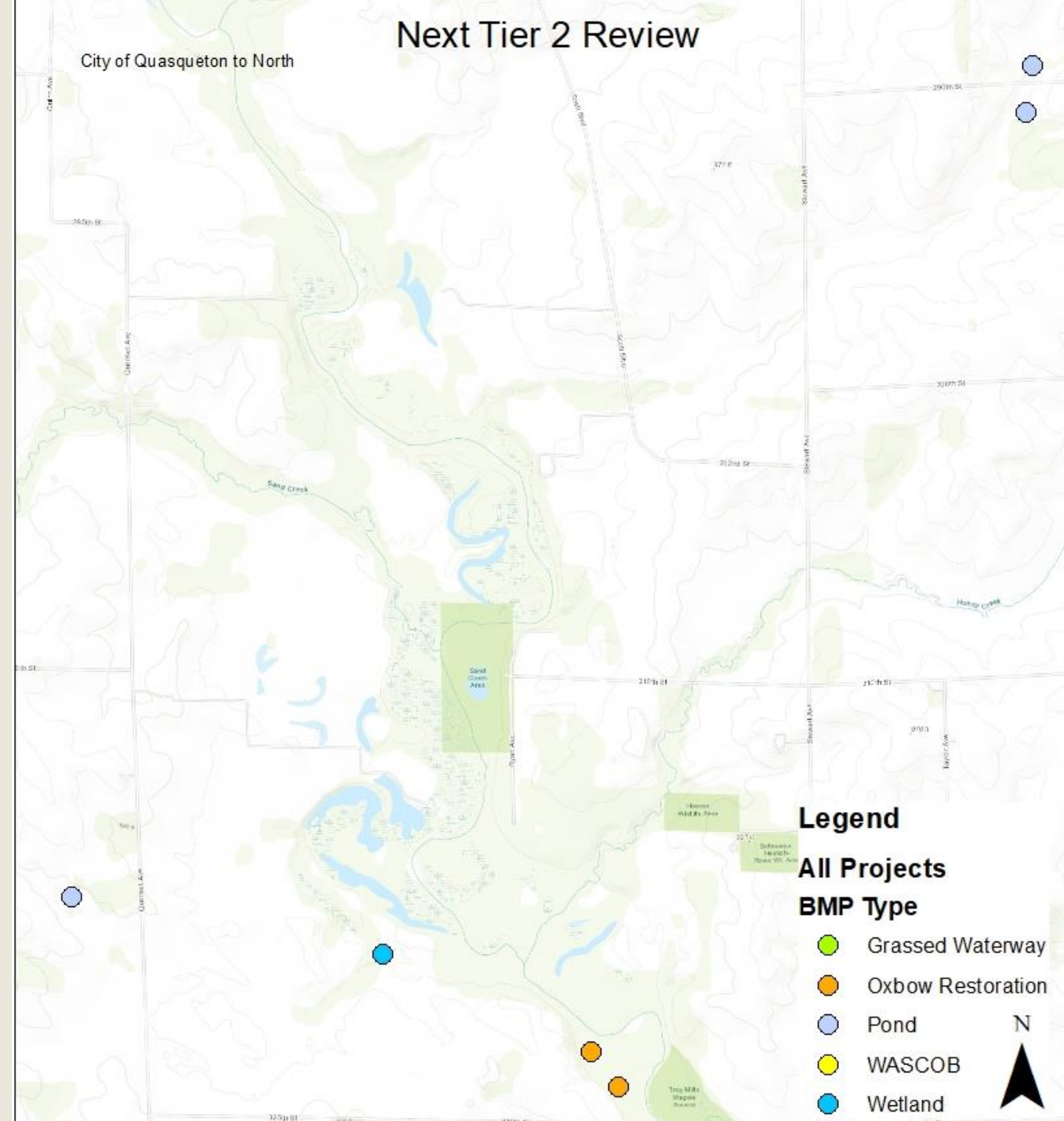
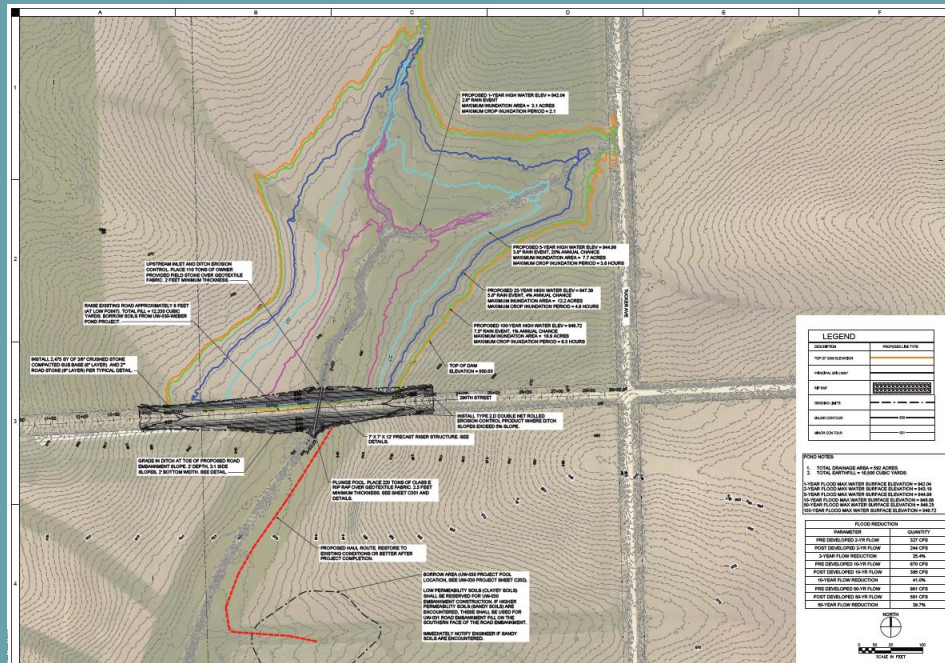
- Waiting for Tier 2 Review
- 3 Projects in Delaware County
- 4 IDNR projects (3 wetlands, 1 oxbow)
- 3 Private Landowner Projects (2 ponds, 1 Oxbow)
- Cost Estimate: \$629,000
- Spring 2021 Construction





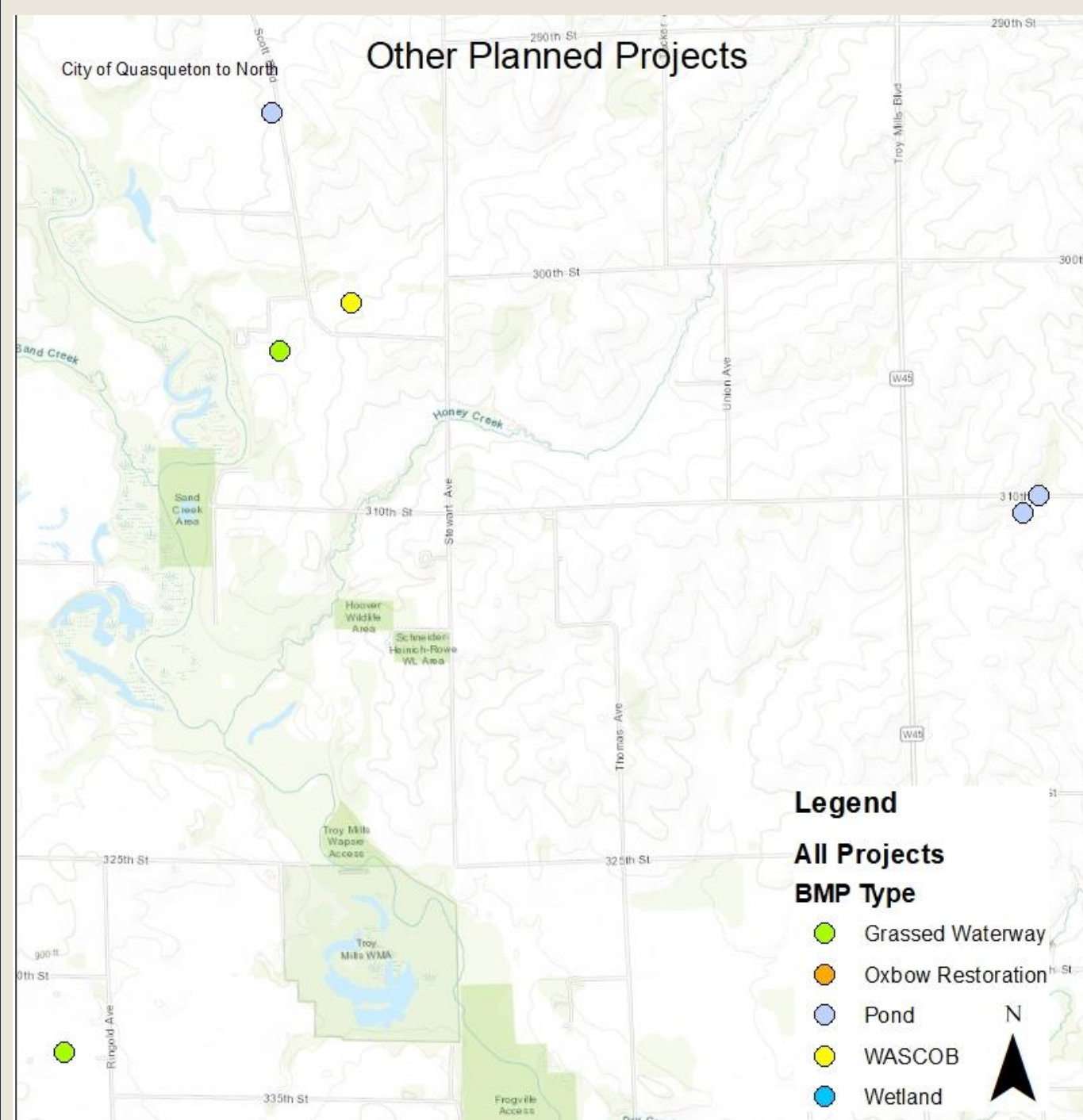
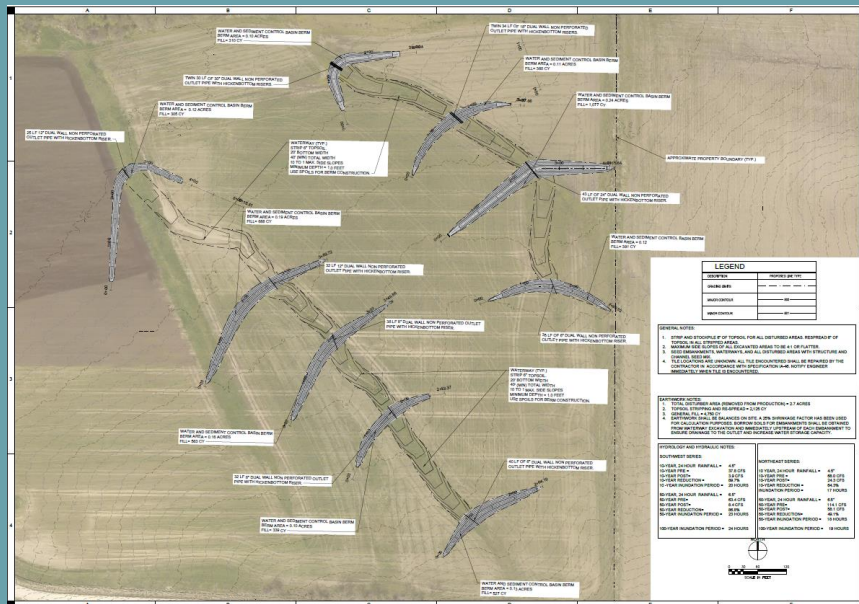
# Next Tier 2 Review Packet

- 6 projects (2 Oxbow, 1 wetland, 2 pond, 1 on-road detention structure)
- Spring-Summer 2021 construction
- Cost Estimate: \$499,200



# Other Planned Projects

- 6 projects (2 Grassed waterways, 1 WASCOB, 2 pond, 1 on-road detention structure)
- Summer 2021 construction
- Cost Estimate: \$378,800





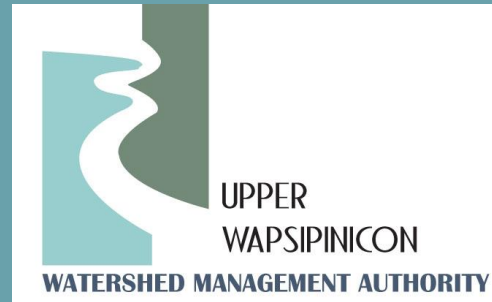
# Water Sampling

- 22 sampling locations
- Three sites average over 10mg/l of nitrates
- Almost all sites averaged over the Bacteria water quality standard of 235CFU/100ml.

For more information go to  
[www.upperwapsi.org/plan](http://www.upperwapsi.org/plan)

Site_id	Watershed	TSS	DRP	Cl	NO3-N	SO4	E coli	Total P
Linn_23	Nugents Creek-Buffalo Creek	9.76	0.17	15.15	6.22	20.93	789.00	0.25
Linn_26	Crows Creek-Wapsi River	19.97	0.19	13.27	7.35	14.79	413.38	0.37
Delaware_21	Silver Creek-Buffalo Creek	20.76	0.27	12.41	6.24	13.49	599.50	0.47
Linn_25	Crows Creek-Wapsi River	25.48	0.23	13.76	5.87	19.66	144.00	0.41
Chickasaw_6	Spring Branch-Little Wapsi River	23.07	0.18	15.80	6.31	12.82	196.86	0.31
Linn_24	Heatons Creek-Wapsi River	11.24	0.16	19.00	5.44	20.21	600.00	0.30
Blackhawk_12	Lower Crane Creek	9.90	0.18	15.38	5.97	21.40	642.29	0.31
Chickasaw_5	Village of Ionia-Wapsi River	8.95	0.19	16.26	6.86	16.09	869.71	0.23
Chickasaw_4	Elk Creek	24.12	0.21	13.67	4.82	13.58	163.43	0.34
Buchanan_18	Otter Creek	3.93	0.15	17.98	11.18	18.79	366.71	0.20
Bremer_14		11.42	0.20	15.73	7.05	17.47	918.14	0.25
Bremer_8	Lower East Branch Wapsi River	7.03	0.14	14.76	6.68	21.00	789.00	0.22
Bremer Plum*		22.60	0.08	7.89	3.08	9.13	3448.00	
Buchanan_15	Village of Fairbank-Little Wapsi River	7.74	0.15	16.85	10.46	18.52	436.25	0.24
Bremer_12A	Upper Crane Creek	14.83	0.20	14.29	7.11	15.78	377.40	0.36
Buchanan_20	Silver Creek-Buffalo Creek	29.00	0.18	15.10	4.43	15.85	3516.25	0.45
Delaware_23	Nugents Creek-Buffalo Creek	4.77	0.32	23.25	10.13	17.19	4329.86	0.38
Chickasaw_7	Middle East Branch Wapsi River	28.00	0.20	14.77	7.27	16.31	542.75	0.34
Chickasaw_3	Mead Creek	24.41	0.18	15.15	4.48	15.88	319.71	0.38
Buchanan_19	Pine Creek	17.43	0.27	14.67	3.79	13.62	210.25	0.48
Blackhawk_13	Camp Creek-Wapsi River	23.33	0.22	13.15	6.28	14.64	609.38	0.44
Linn_22	Walton Creek-Wapsi River	29.47	0.21	12.65	7.12	20.11	443.63	0.33

\*Only sampled during the month of May



# OTHER NEWS

- Iowa Learning Farms Virtual Field Day: Oct. 15<sup>th</sup>

[www.upperwapsi.org](http://www.upperwapsi.org)

Tori Nimrod  
UWRW Coordinator  
tori@northeastiowarcd.org

Ross Evelsizer  
UWRW Coordinator  
ross@northeastiowarcd.org