

A stylized, colorful illustration of a landscape. The foreground features rolling green hills in various shades of green, with a dark brown path winding through them. On the left, there is a green tree with a brown trunk, a purple flower, and a cluster of orange flowers. A small red bird is flying in the sky above the tree. The background consists of light blue and white wavy bands representing a sky or water. The overall style is flat and modern.

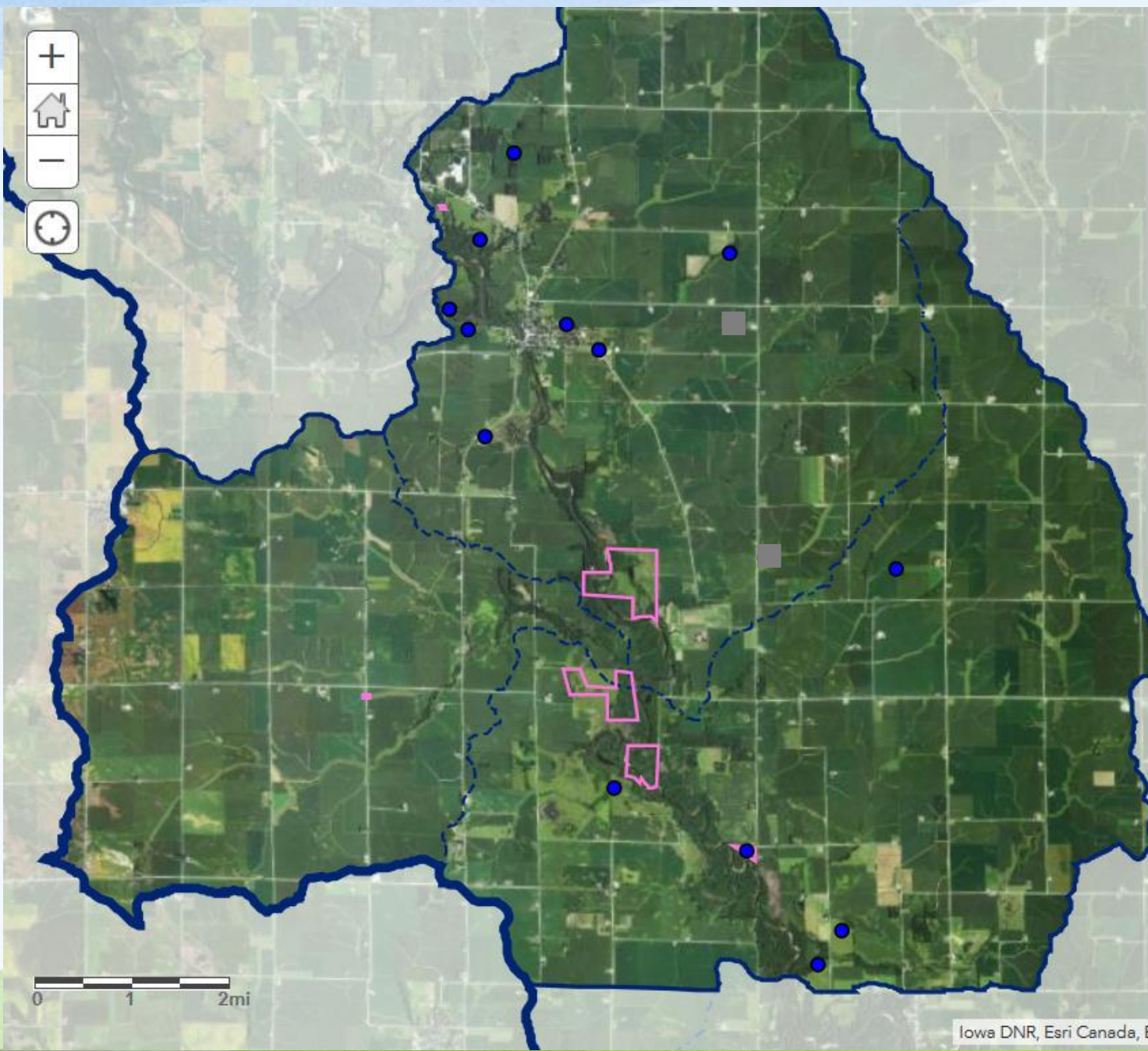
2018 October Update

By Angie Auel, Project Coordinator

Flood Reduction Practices Eligible for 90 % Cost Share

Through the Iowa Watershed Approach statewide program, qualifying landowners can receive up to 90 percent cost-share assistance to implement small-scale flood mitigation practices.





Legend

- Pond or Wetland
- Landowner Interested
- No Longer Planned



Project Name	Project Type	Est. Cost for Landowner 10%	Est. Total Cost	Site Prep/Mobilization
UW-001-	Pond	\$3,780.00	\$37,800.00	\$3,500.00
UW-002-	Pond	\$2,630.00	\$26,300.00	\$1,800.00
UW-003-	Pond	\$1,860.00	\$18,600.00	\$1,800.00
UW-004-	WASCOBS	TERMINATED	TERMINATED	TERMINATED
UW-006-	Pond	\$1,260.00	\$12,600.00	\$1,200.00
UW-006-	Dry Basin	\$670.00	\$6,700.00	\$1,700.00
UW-007-	Oxbow, Pond			
UW-008-	Pond	TERMINATED	TERMINATED	TERMINATED
UW-009-	Wetland			
UW-010-	Pond	\$5,390.00	\$53,900.00	\$1,800.00
UW-010-	Wetland			
UW-011-	Pond	\$3,270.00	\$32,700.00	\$1,800.00
UW-012-	Oxbow			
UW-013-	Wetland, Pond			
UW-014-	TBD			
UW-015-	Wetland			
UW-016-	Oxbow	\$15,120.00	\$151,200.00	\$16,100.00
UW-016-	TBD			
UW-017-	Wetland			
UW-017-	Pond			
UW-018-	TBD			
TOTAL		\$33,980.00	\$339,800.00	\$29,700.00
			GRAND TOTAL	\$369,500.00

Next Steps:

- *Project Coordinator enters practices into BMP Tracker*
- *Project Coordinator contacts Earthview Environmental to begin Archeological Review*
- *Applications are approved by WMA Technical Committee*

Steps to complete during the Winter:

- *Either Archeological Review Clears or we go into a Phase 1 Review*
- *Engineer completes preliminary survey, investigation & design*
- *Environmental Evaluation begins*