



# NORTHEAST IOWA RC&D

## Resource Conservation & Development

Ross Evelsizer,  
Watershed Planner  
GIS Specialist  
[ross@northeastiowarcd.org](mailto:ross@northeastiowarcd.org)

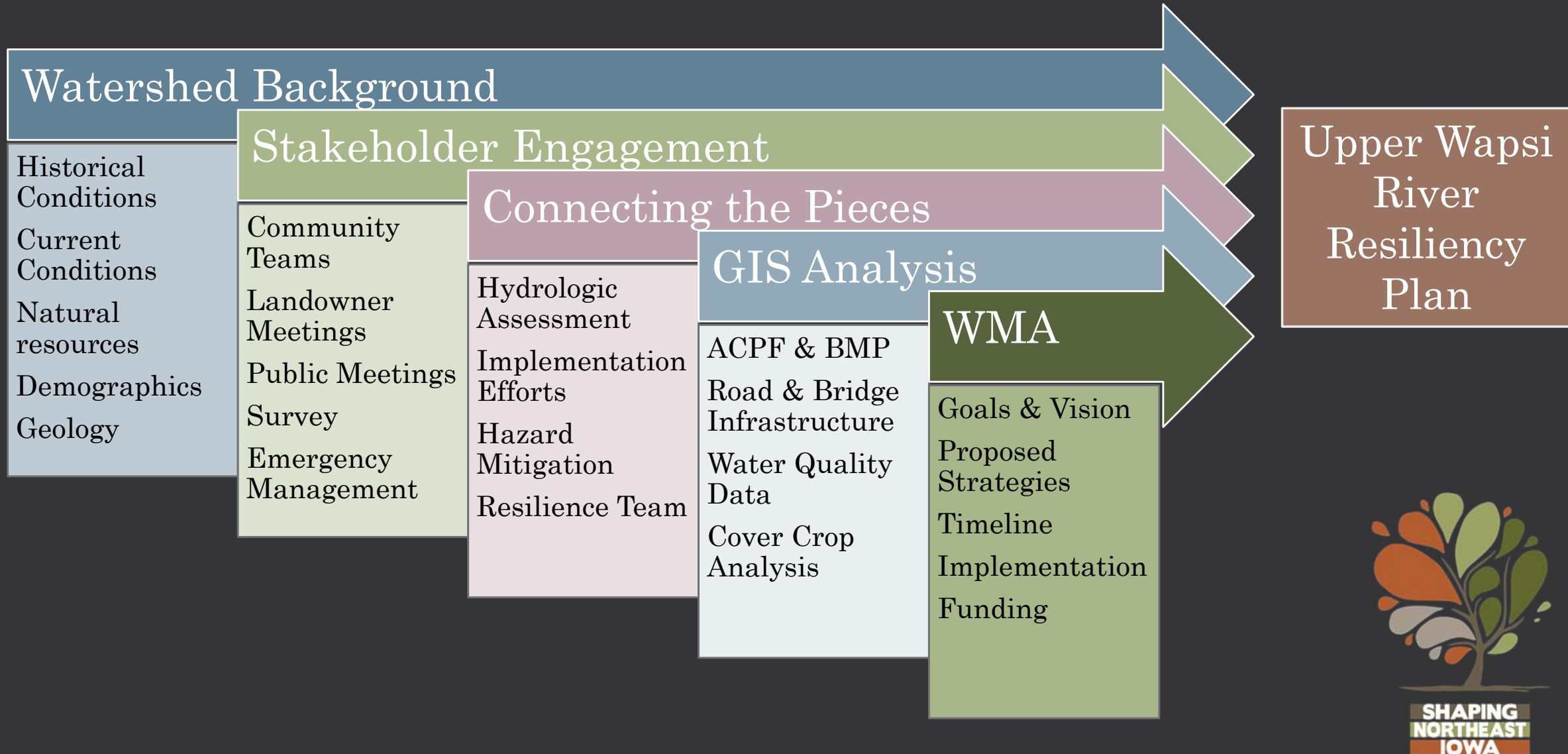
Megan Buckingham,  
Outreach Coordinator  
[megan@northeastiowarcd.org](mailto:megan@northeastiowarcd.org)

P.O. Box 916 Postville, IA 52162  
563-864-7112

Tori Hartman,  
Project Technician  
GIS Analyst  
[tori@northeastiowarcd.org](mailto:tori@northeastiowarcd.org)

April 3rd, 2018

# Upper Wapsi River Watershed Planning



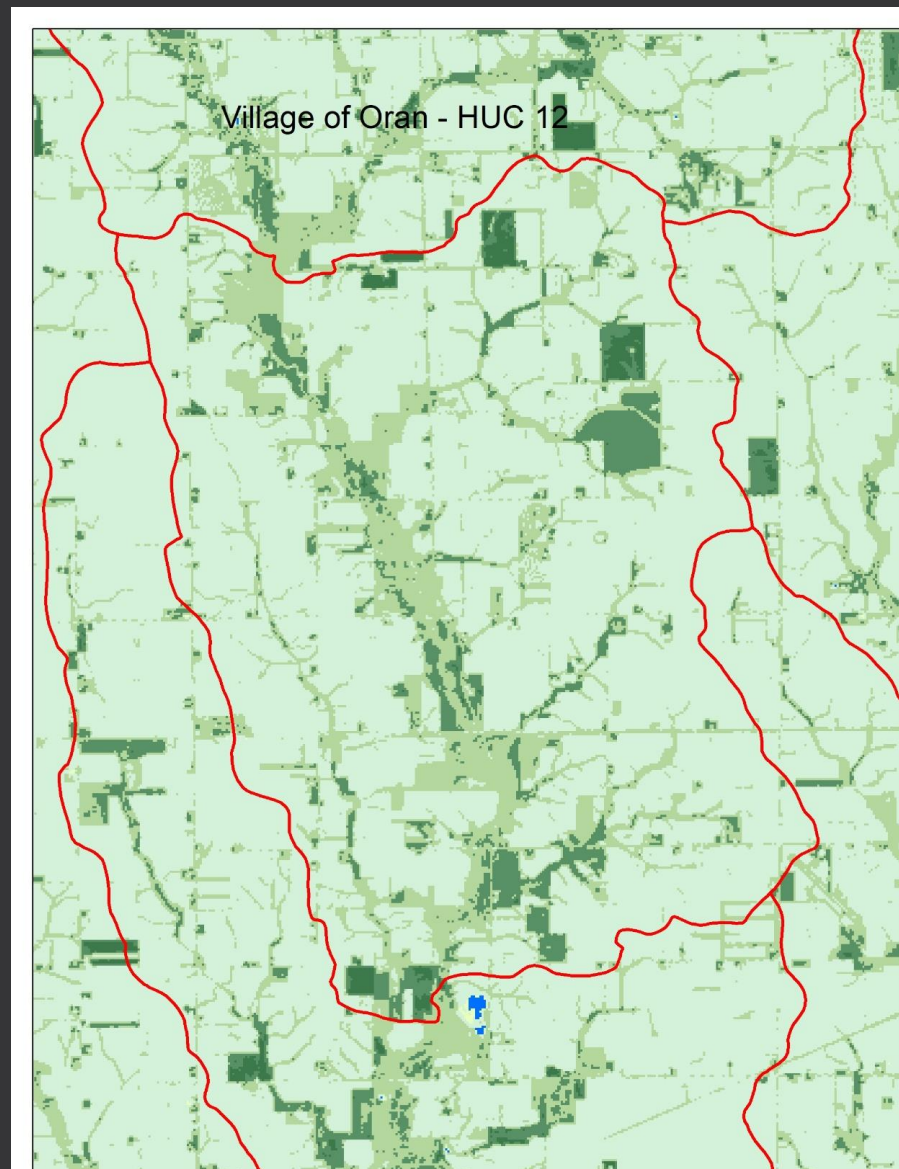
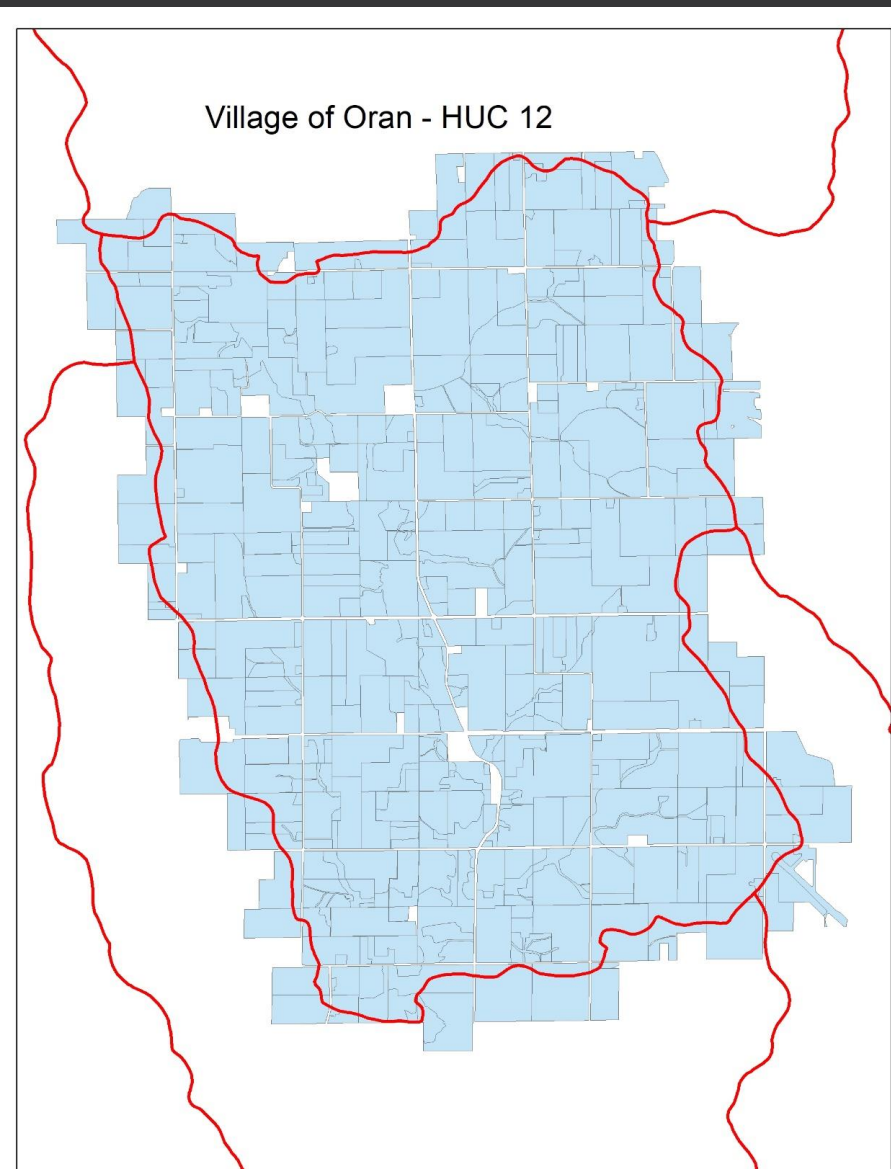
# UWR GIS Analysis

- Agricultural Conservation Planning Framework (ACPF)
  - Iowa Flood Center & RC&D
- BMP Analysis
  - Iowa DNR & RC&D
- Road & Bridge Infrastructure
  - RC&D & County Engineers
- Water Quality Data
  - UWRWMA & RC&D
- Cover Crop Analysis
  - RC&D

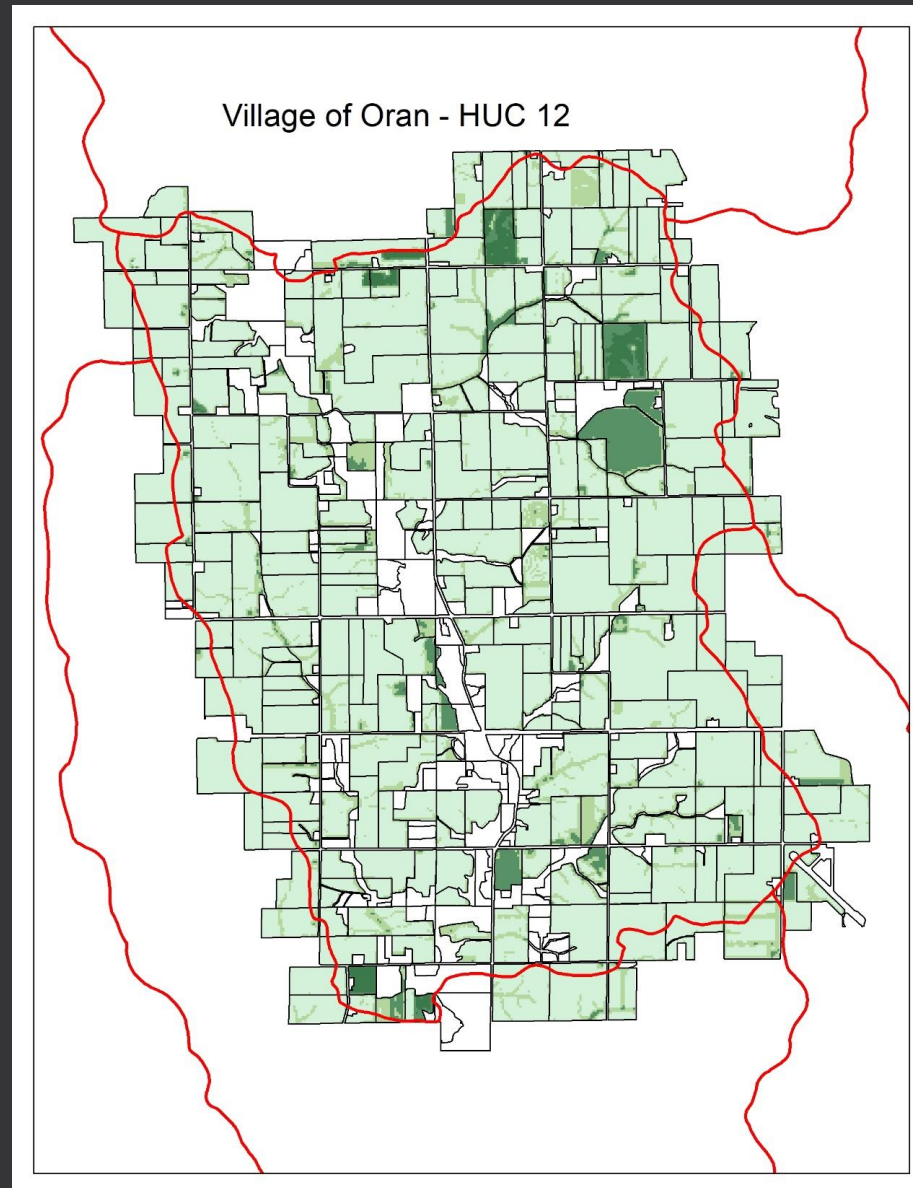




# Cover Crops in the Wapsi



# Cover Crops in the Wapsi



# Cover Crops in the Wapsi

Acres	119.7633
isAG	1
Shape_Length	2807.900243
Shape_Area	484355.809631
OBJECTID	78
FBndID	F070801020503_78
GenLU	C/S/Perennial Rotation
CropRotatn	BCCPPP
CropSumry	C2B1P3
CCCount	1:6
MixCount	1:6



Acres	191.3486
isAG	1
Shape_Length	4617.22924
Shape_Area	773866.420175
OBJECTID	323
FBndID	F070801020503_323
GenLU	C/S with Continuous Corn
CropRotatn	BCCCBC
CropSumry	C4B2
CCCount	2:6
MixCount	0:6



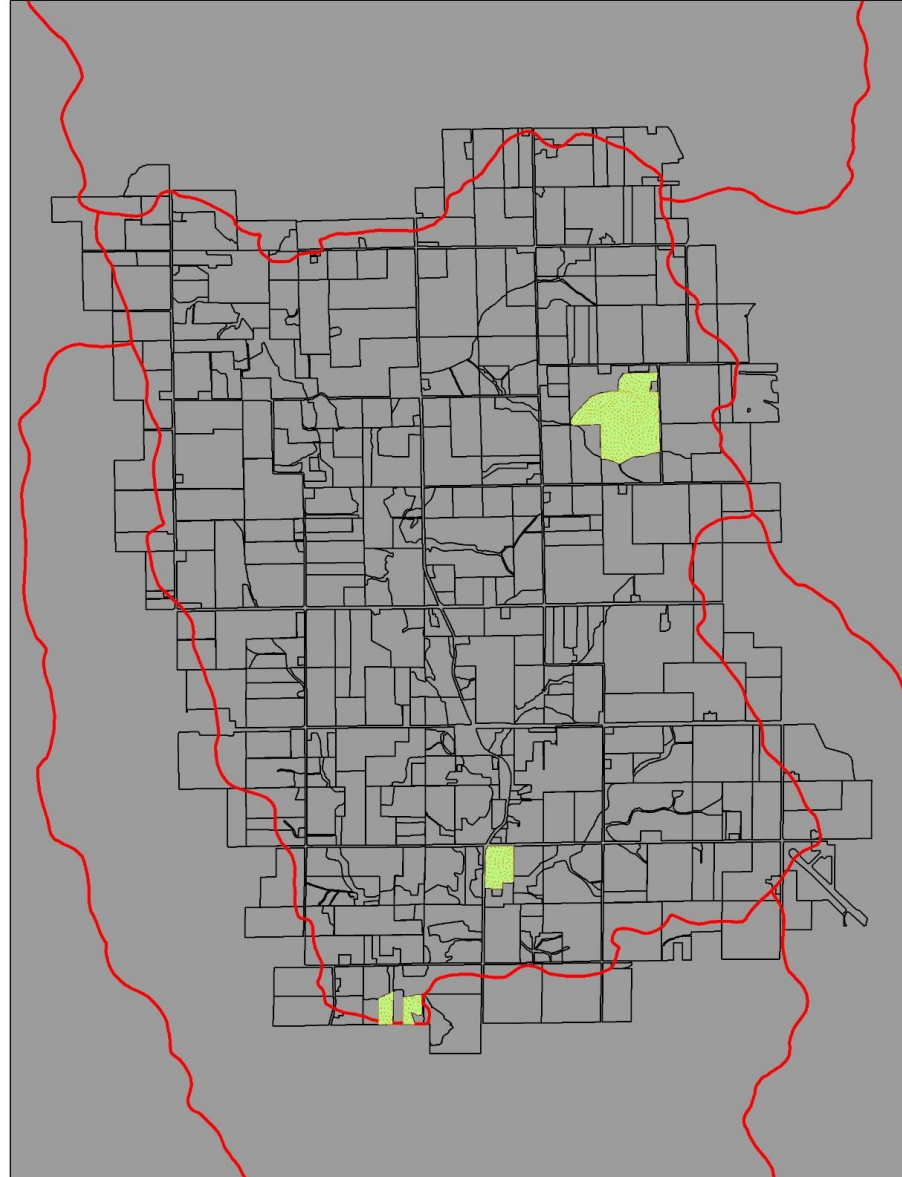


# Cover Crops in the Wapsi



# Cover Crops in the Wapsi

- 18,900 acres – HUC 12
- 18,640 cropland acres\*
- 319 cover crop acres
- 1-2% of the total area





# Why are cover crops important?



- Cover Crops + No-till increases organic matter in the soil by 0.1%/yr
- 0.1% soil organic matter increases water capacity by 2,500 gallons of water per acre
- 1 inch rainfall = 27,000 gallons of water per acre



# Why are cover crops important?

- Average of 31% N reduction
- Average of 29% P reduction





# Why are cover crops important?

- 75% of land in the UWR is agricultural

\*About 10% higher than Iowa





# Upper Wapsi River Watershed Planning

