



A vision for a more resilient Iowa

The Iowa Watershed Approach

Antonio Arenas

Assistant Research Engineer, Iowa Flood Center

Antonio-arenasamado@uiowa.edu

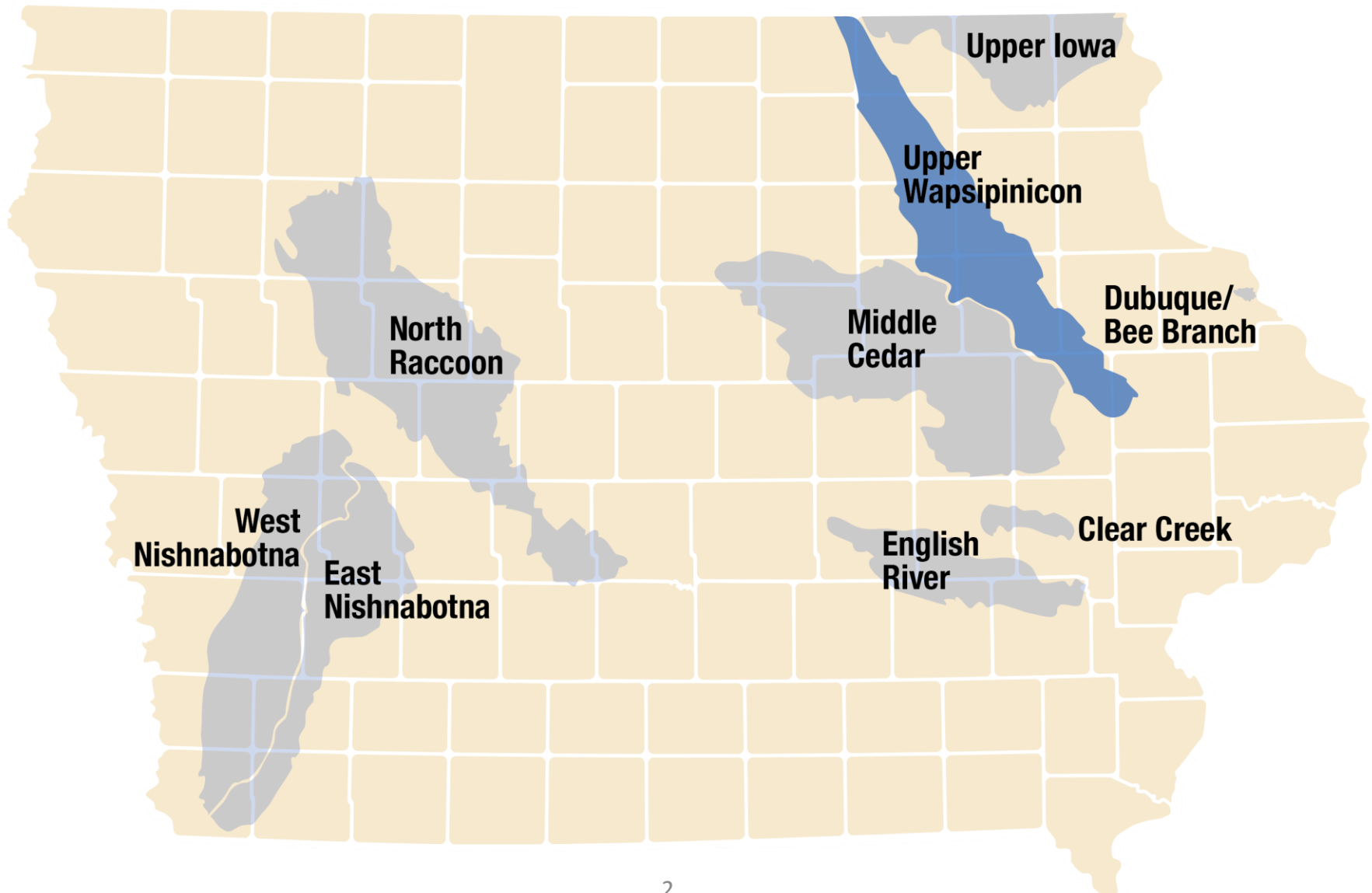
Ashlee Johannes

IWA Flood Resilience Coordinator

Ashlee-johannes@uiowa.edu



The Iowa Watershed Approach



Highlights of Flood Resilience Survey Results

WHEN ASKED ON THE SURVEY...

Indicate your level of agreement with the statement: “My community is flood resilient.”

Responses varied between feeling pretty resilient and not resilient

In your experience, where in your community is flooding likely to occur?

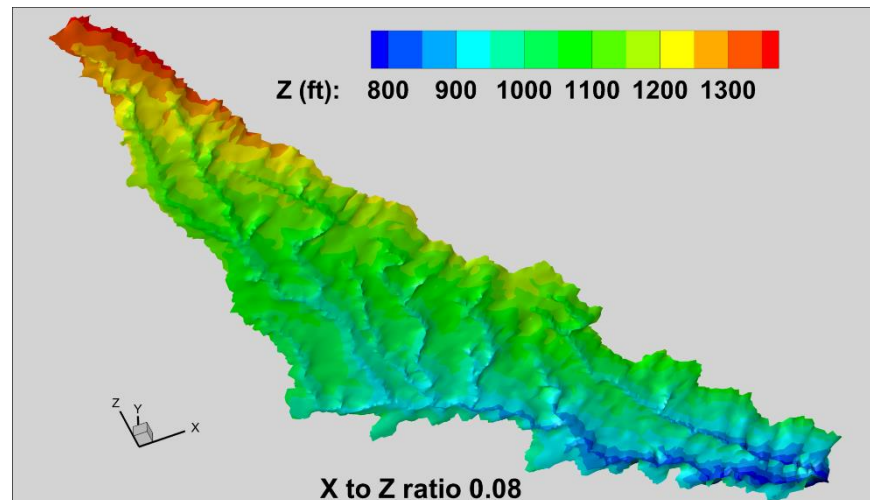
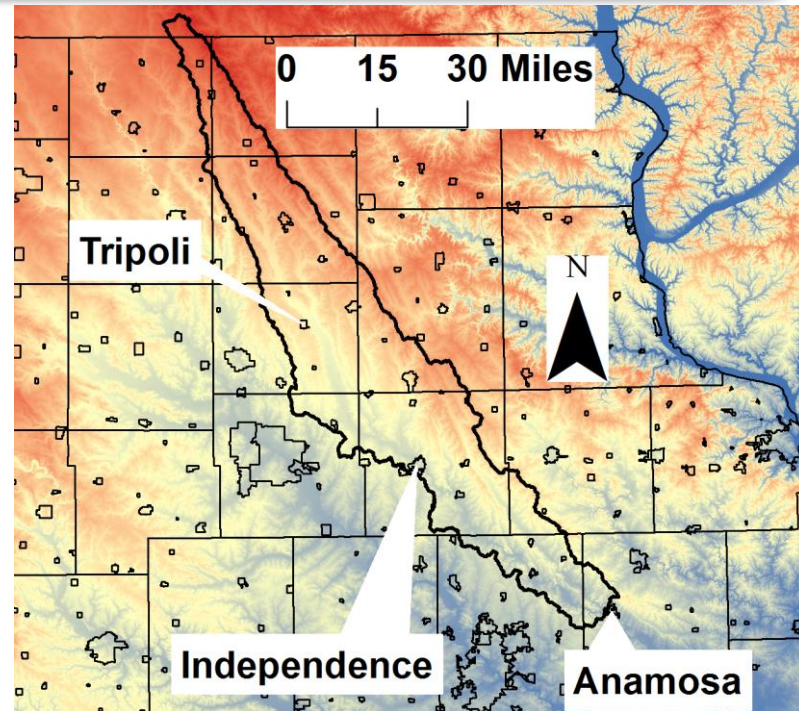
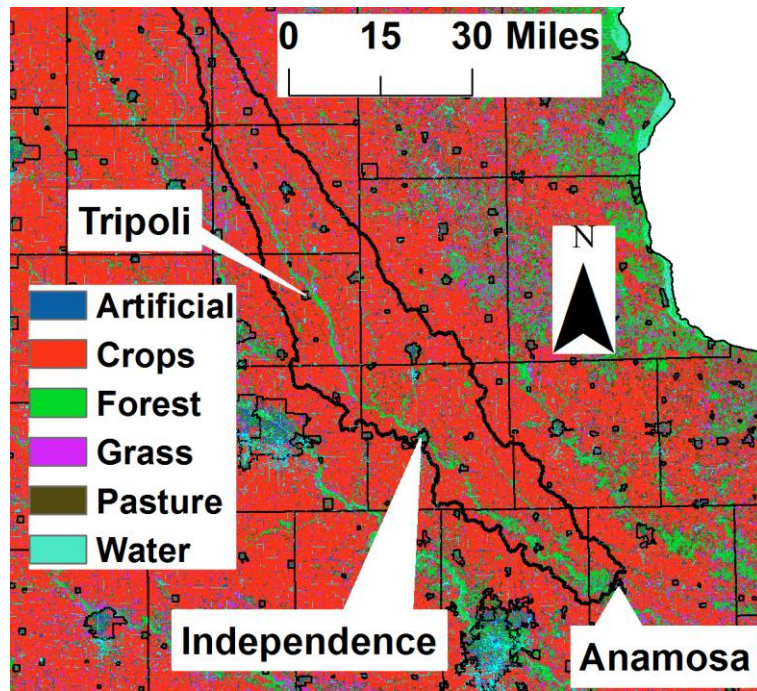
- City of Independence
- Smaller communities with less available money
- Neighborhoods with low resiliency

Who else do you think should be involved in the IWA project or in resilience activities who were not present at this meeting?

- Ag groups
- County engineers

**Flood Resilience Team is looking
forward to working with you to
improve flood resilience in your
watershed and communities!**

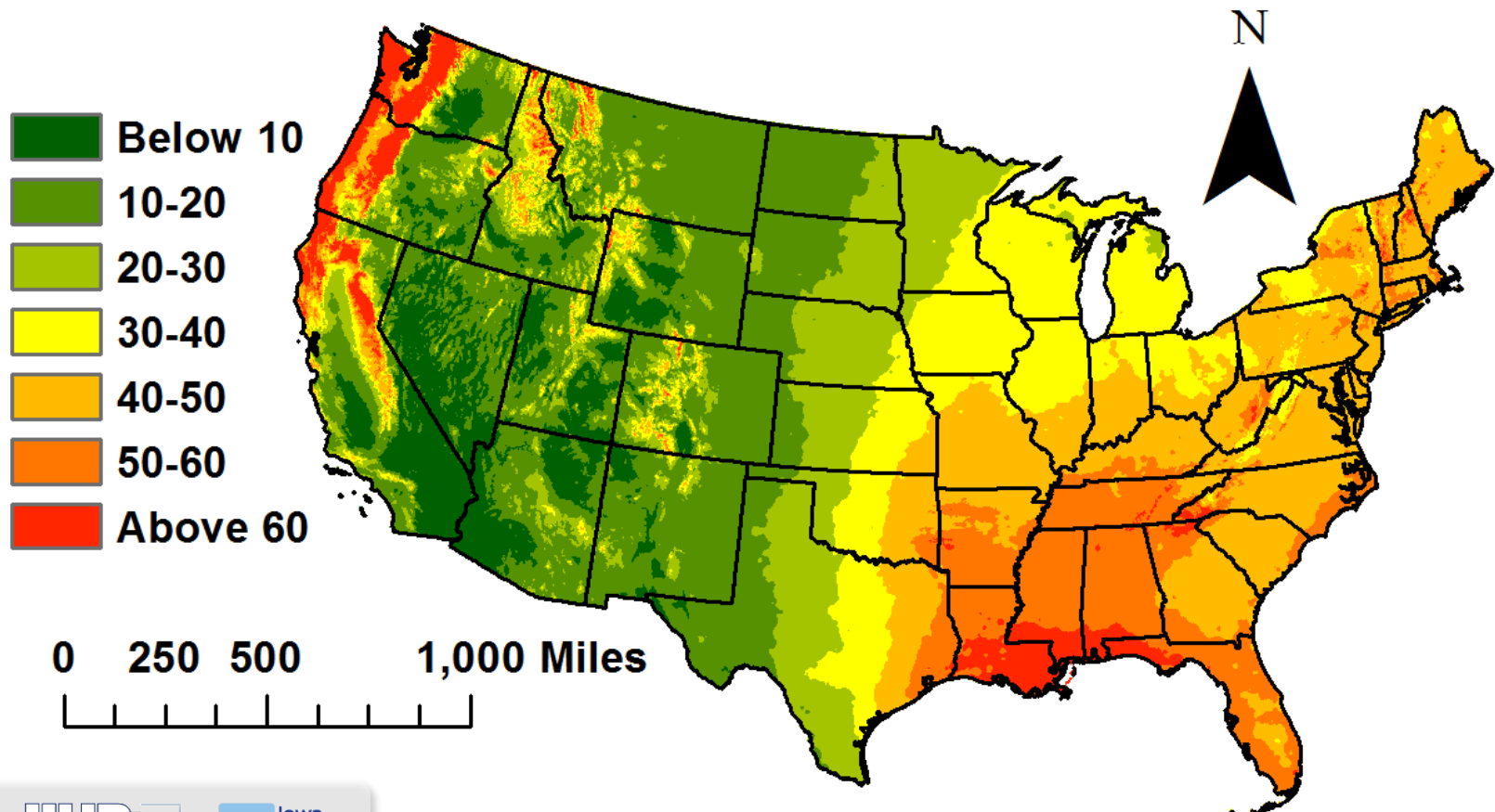
The Iowa Watershed Approach



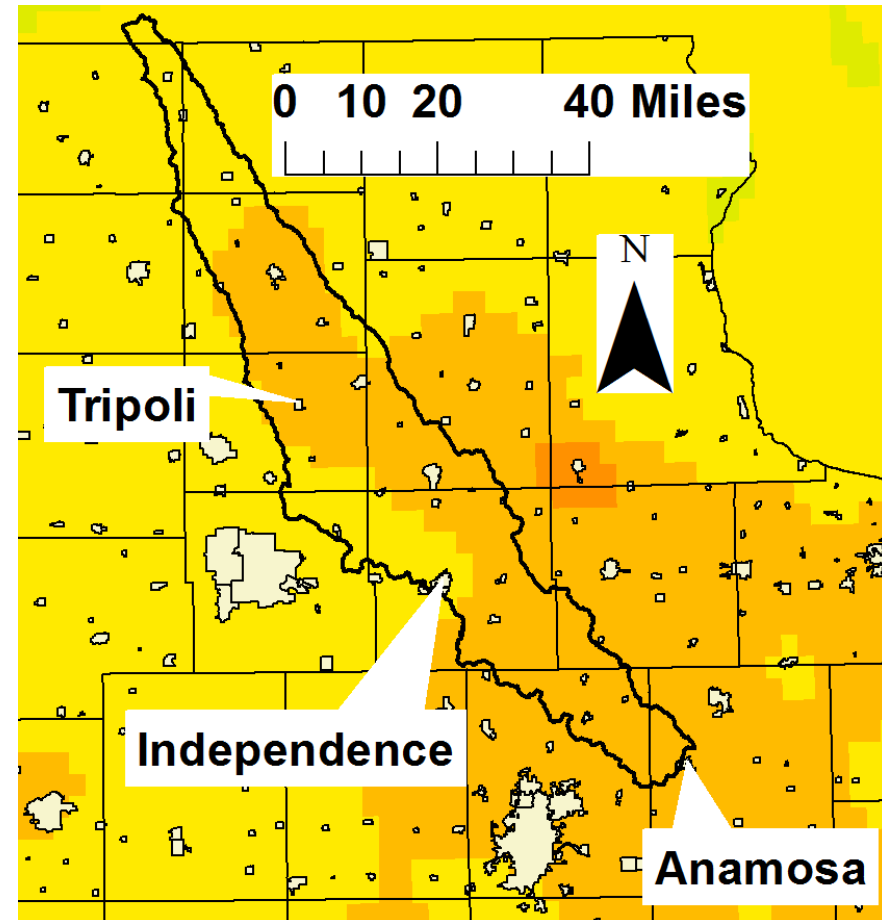
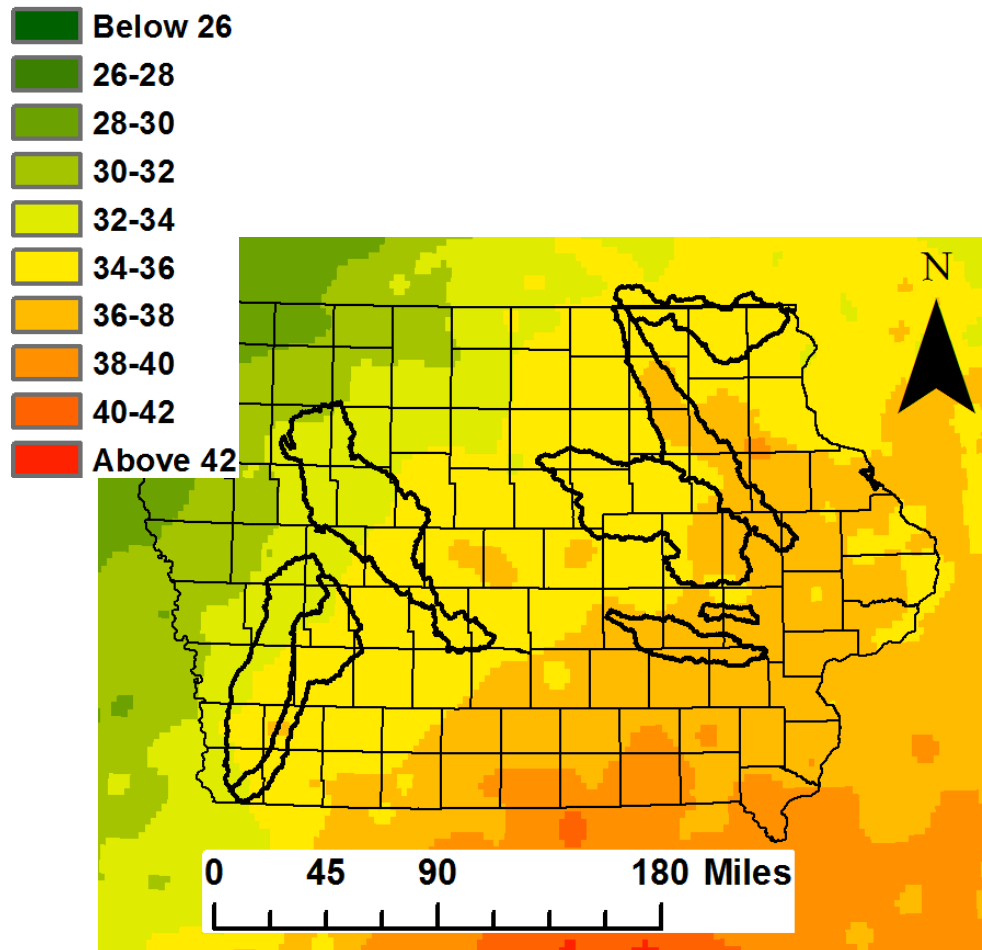
The Iowa Watershed Approach

Average annual precipitation.

Estimates are based on the 30-year
annual average (1981-2010).

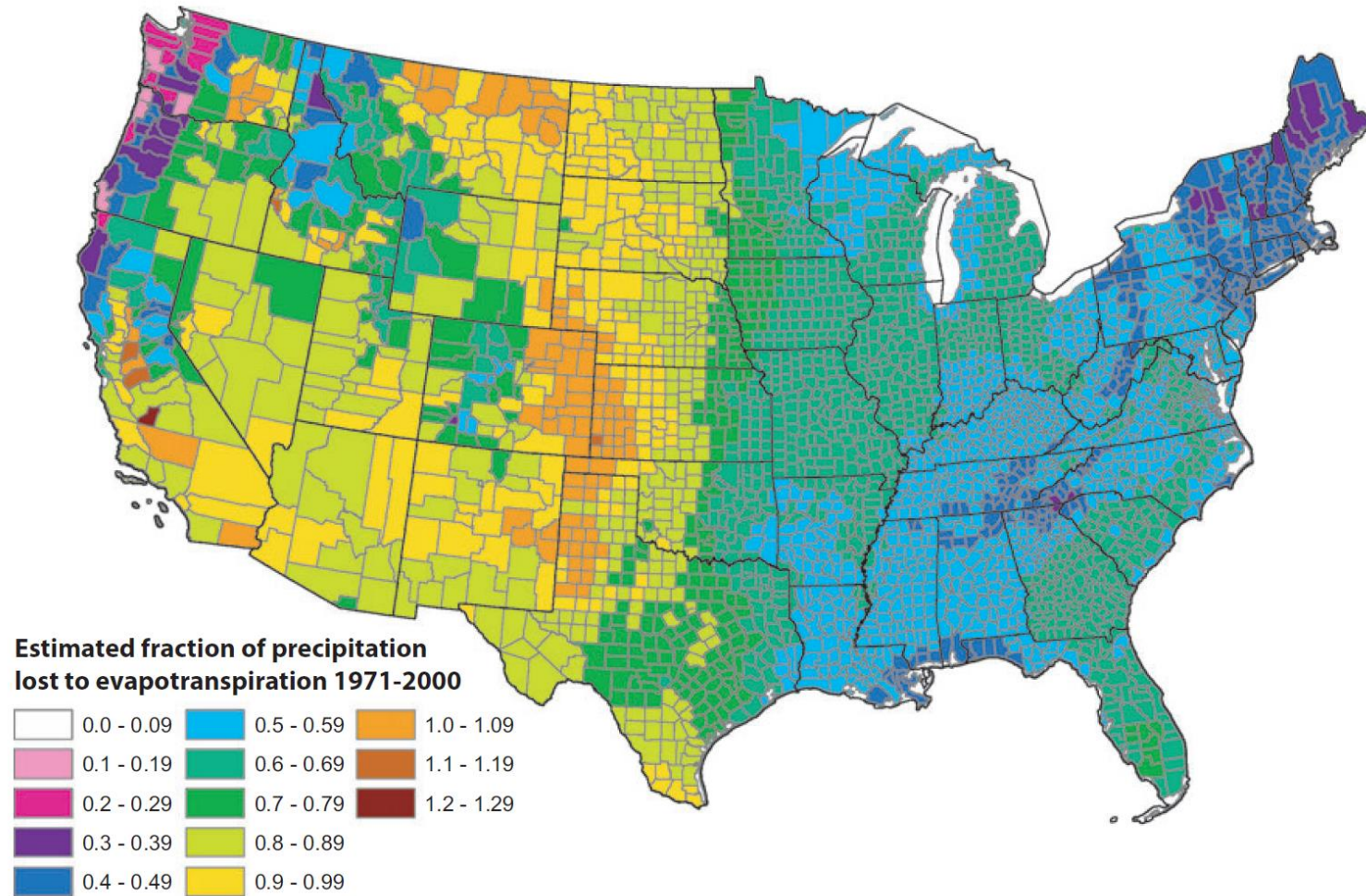


The Iowa Watershed Approach



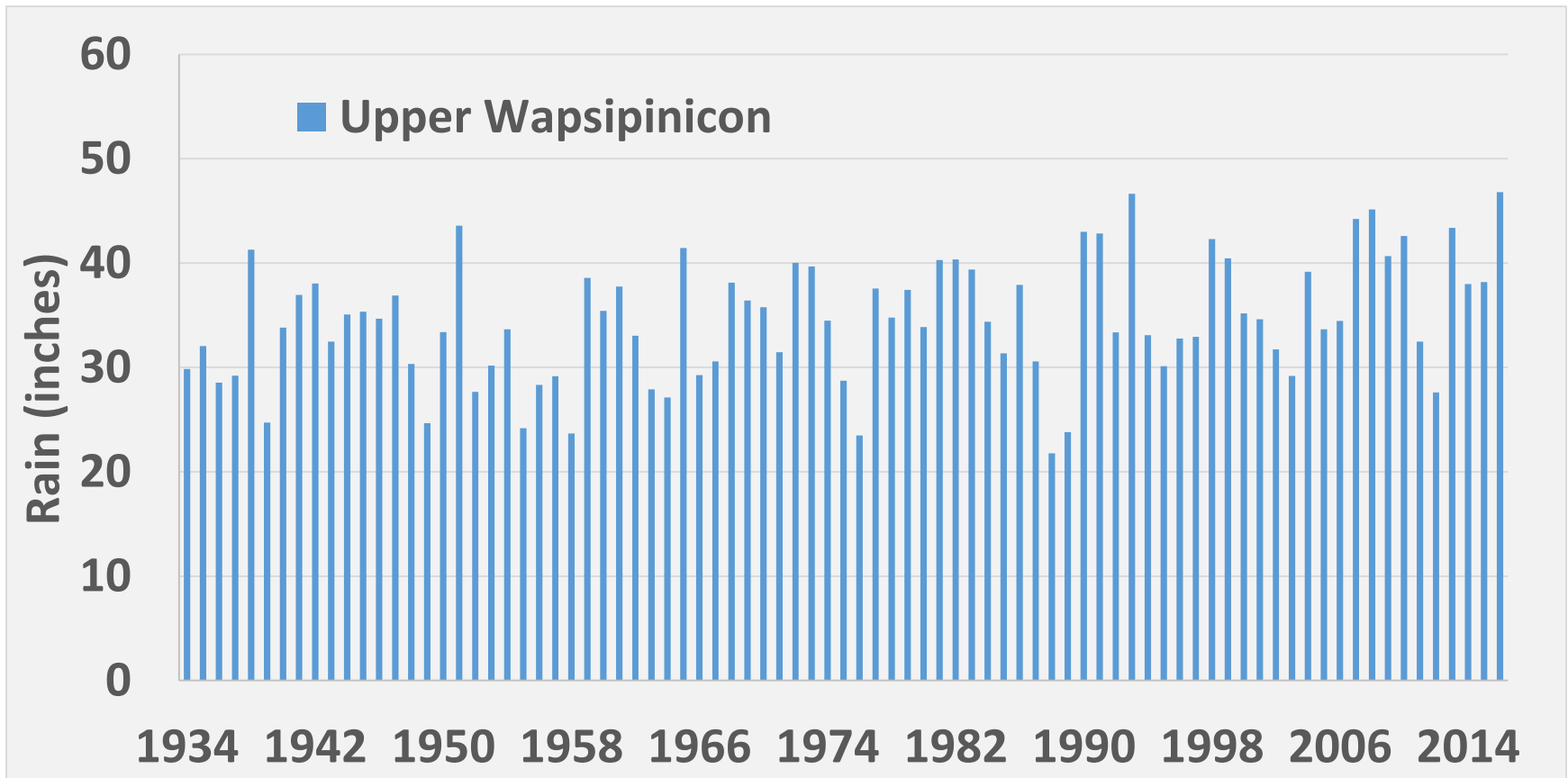
(Data source: <http://www.prism.oregonstate.edu/>)

The Iowa Watershed Approach

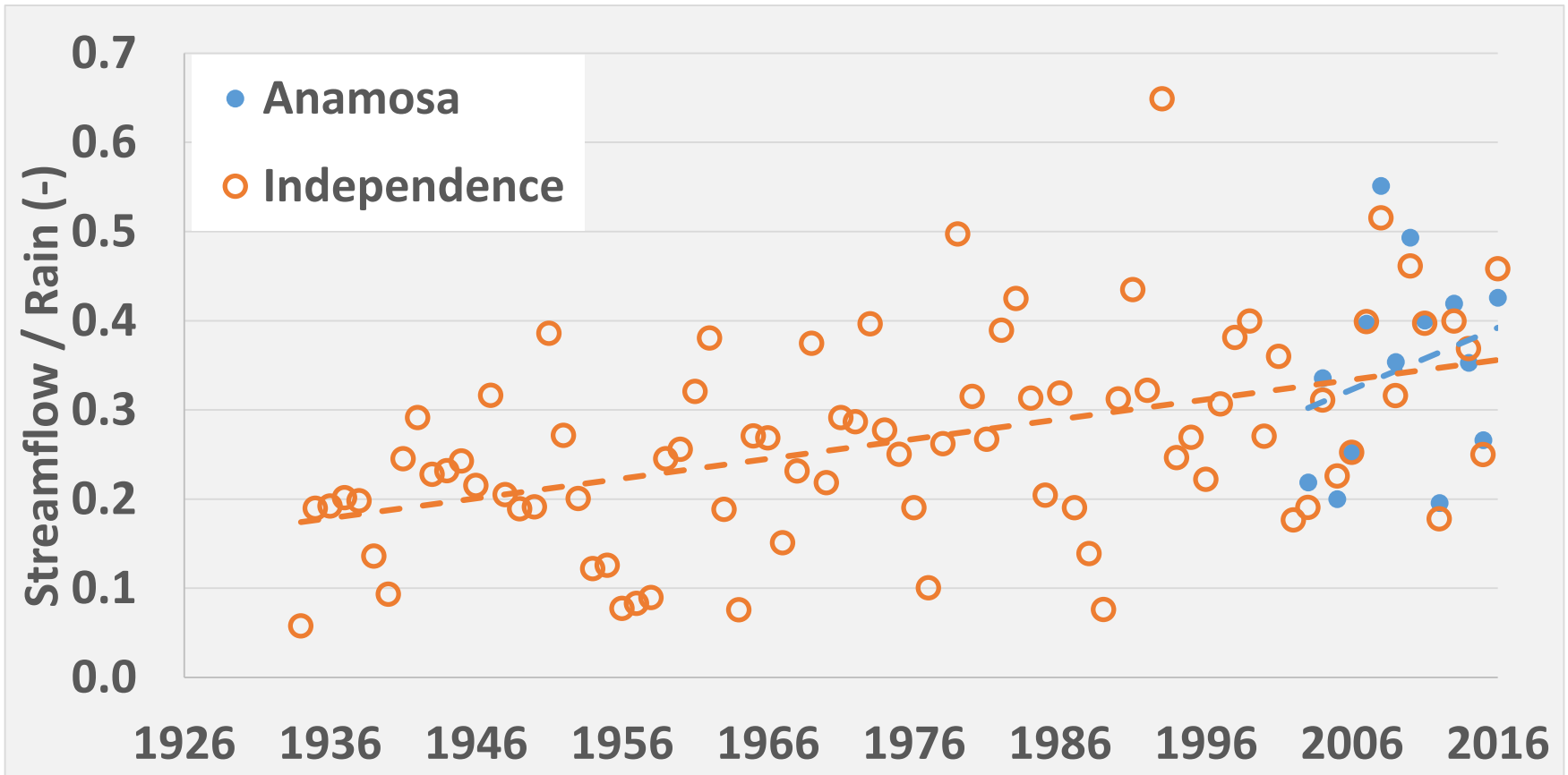


Source: Sanford, Ward E., and David L. Selnick. "Estimation of evapotranspiration across the conterminous United States using a regression with climate and land-cover Data1." *JAWRA Journal of the American Water Resources Association* 49.1 (2013): 217-230.

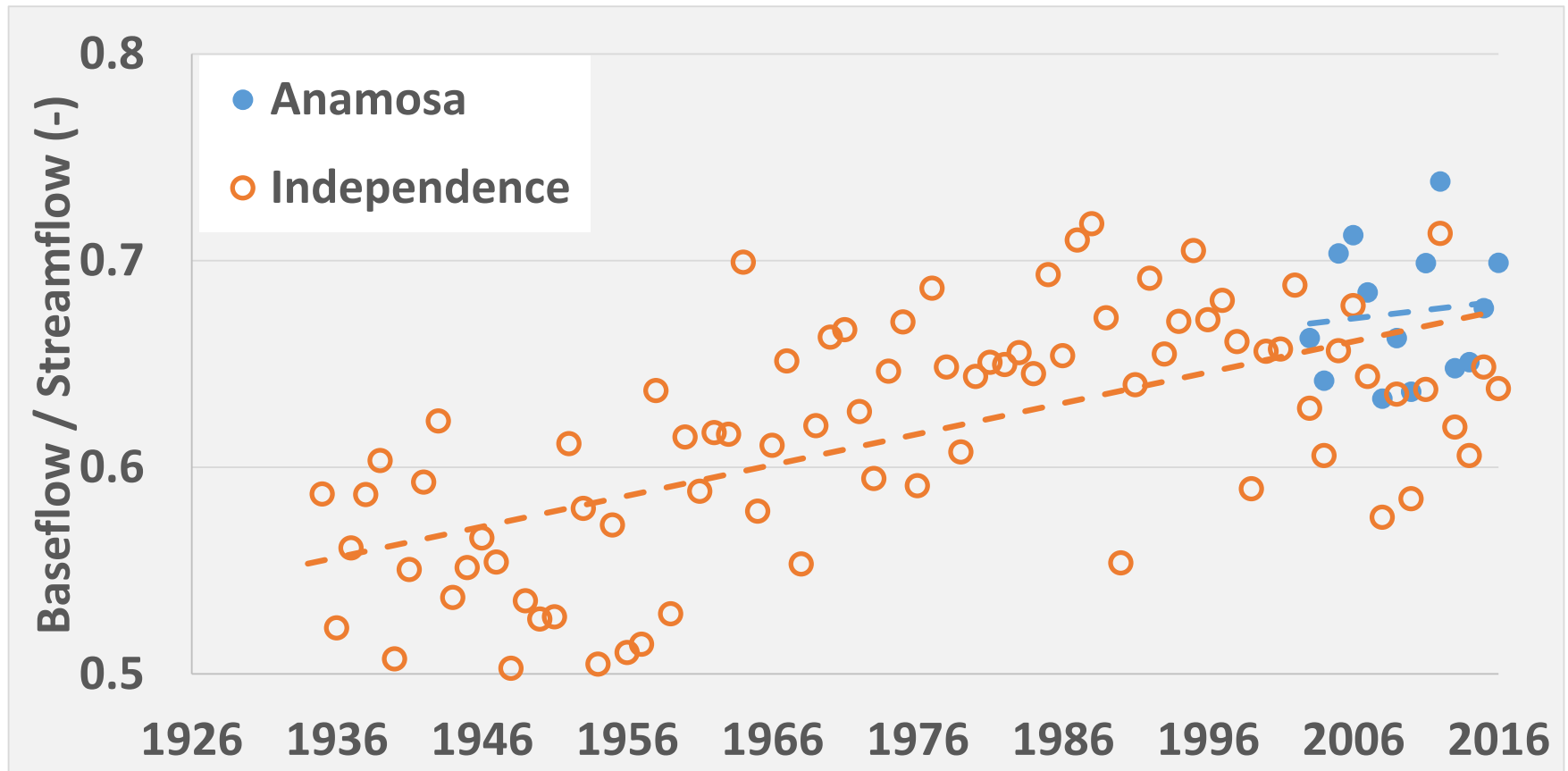
The Iowa Watershed Approach



The Iowa Watershed Approach

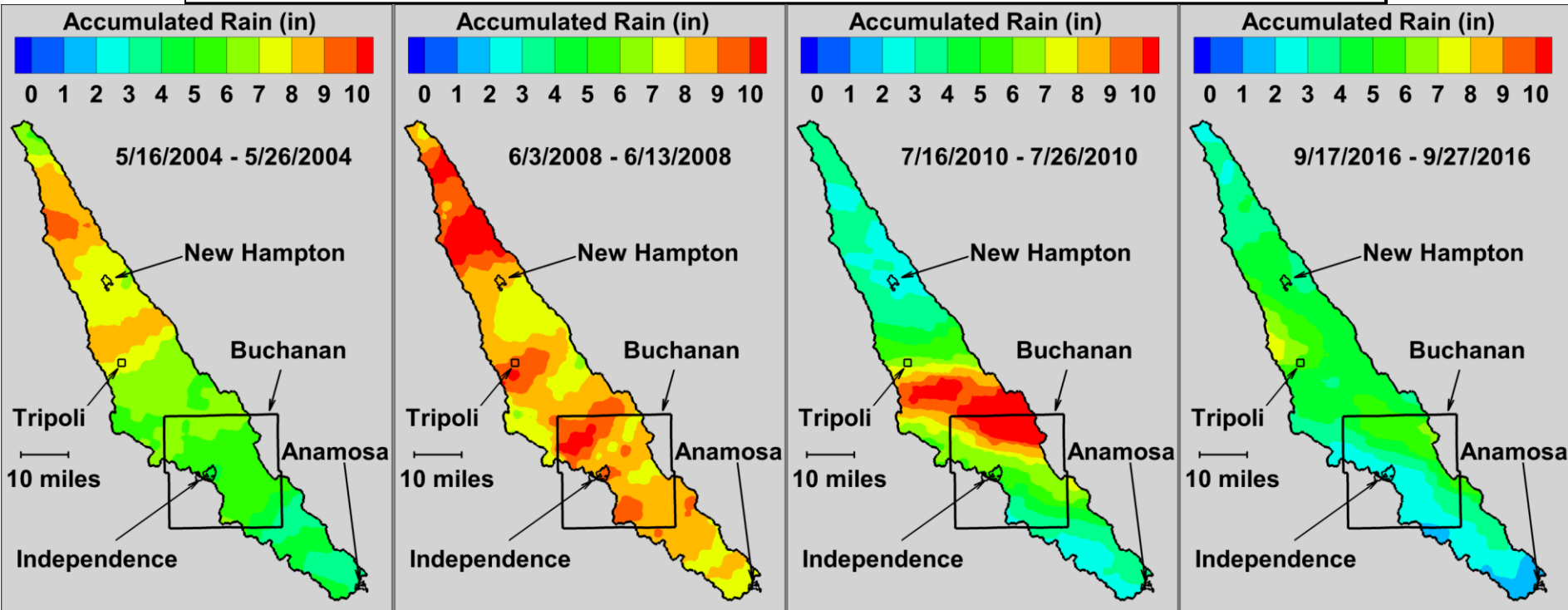


The Iowa Watershed Approach

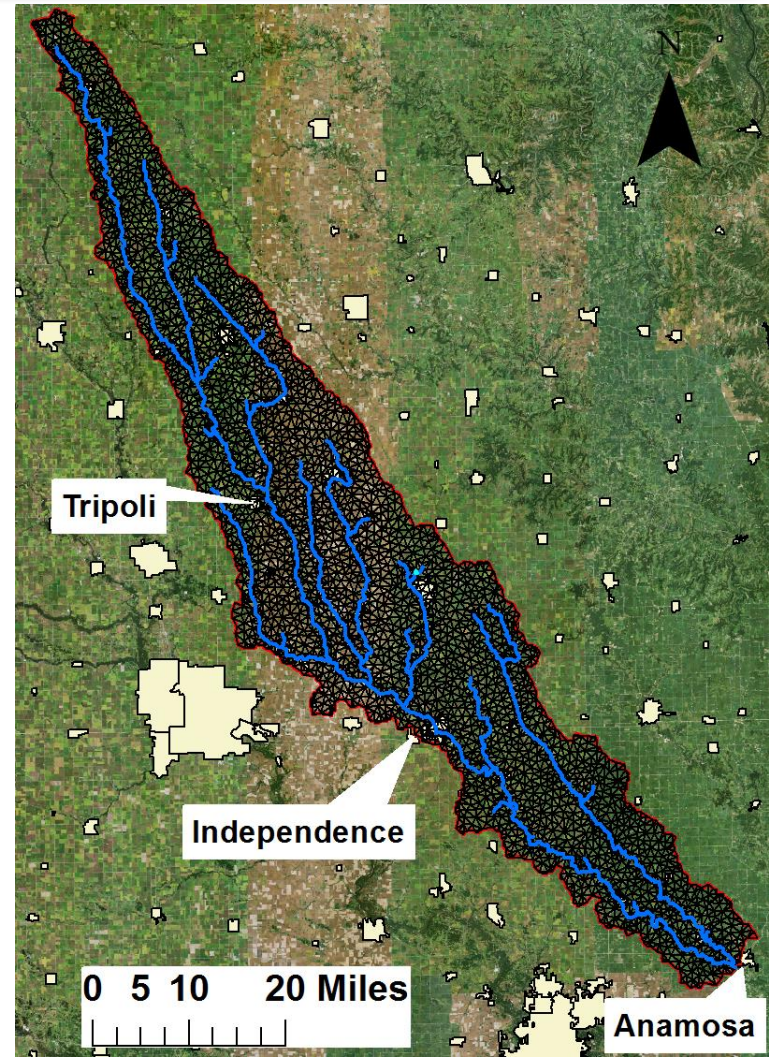
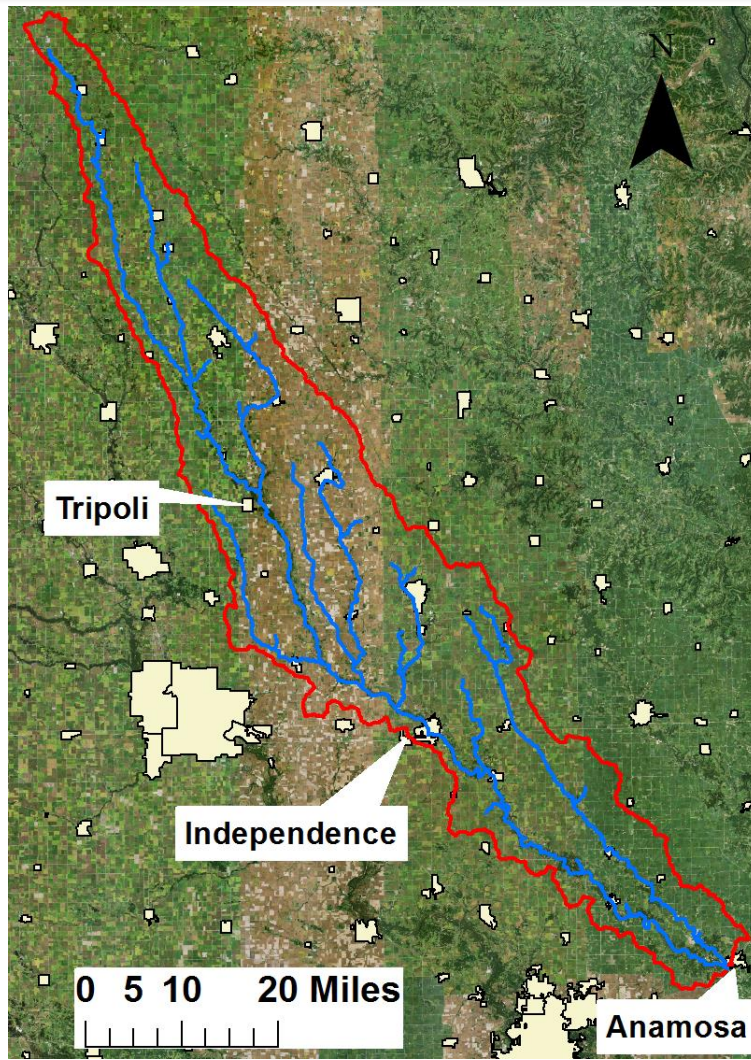


The Iowa Watershed Approach

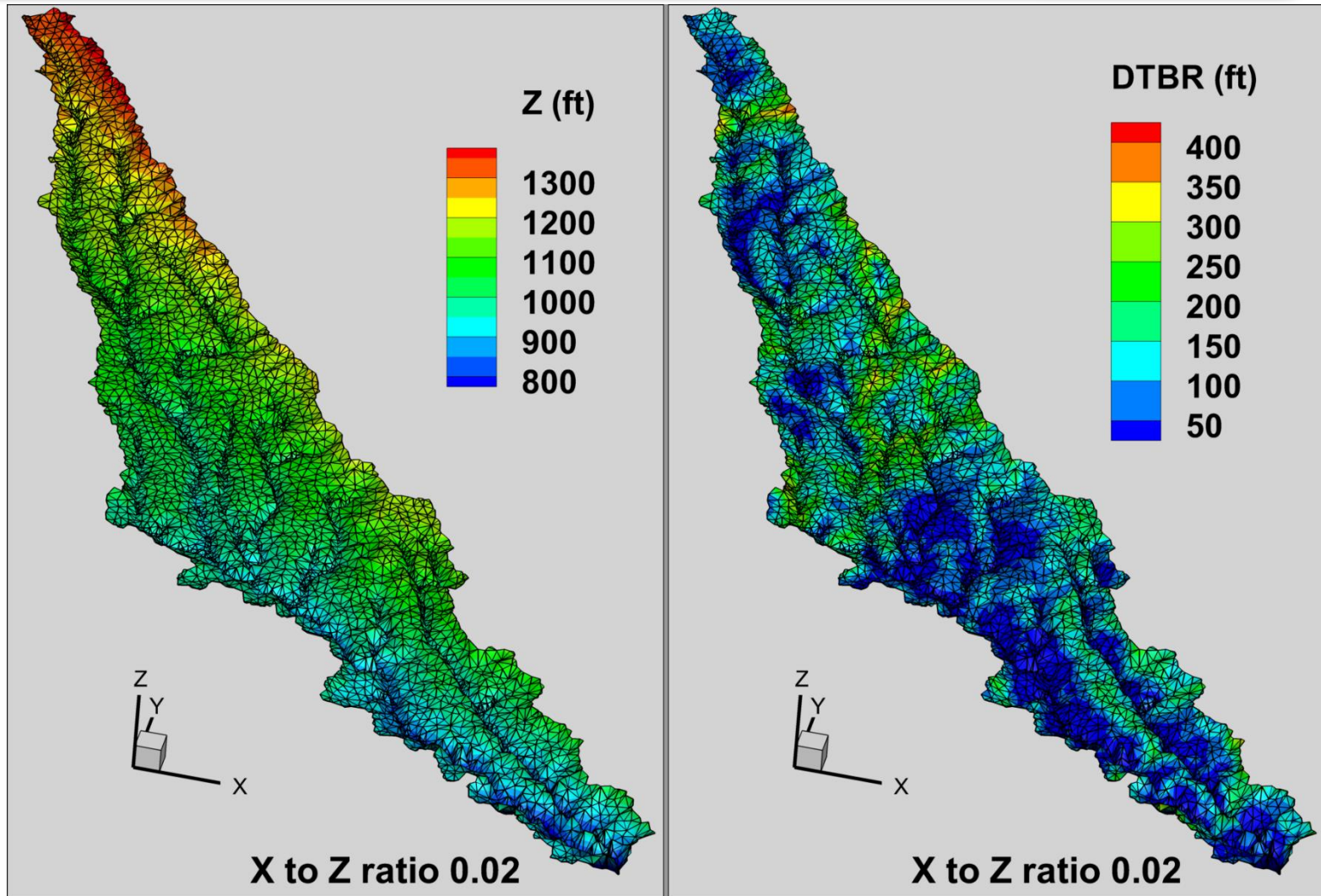
Historic Crests		
Near Tripoli (15)	At Independence (15)	At Anamosa (21.5)
18.50 ft on 07/21/1999	22.35 ft on 05/18/1999	26.18 ft on 06/13/2008
18.24 ft on 06/09/2008	21.11 ft on 07/18/1968	23.71 ft on 07/26/2010
17.26 ft on 07/01/1969	20.30 ft on 08/26/1990	22.90 ft on 07/21/1968
17.22 ft on 09/23/2016	19.36 ft on 09/25/2016	22.76 ft on 09/27/2016
15.97 ft on 05/23/2004	18.86 ft on 06/11/2008	22.73 ft on 05/26/2004



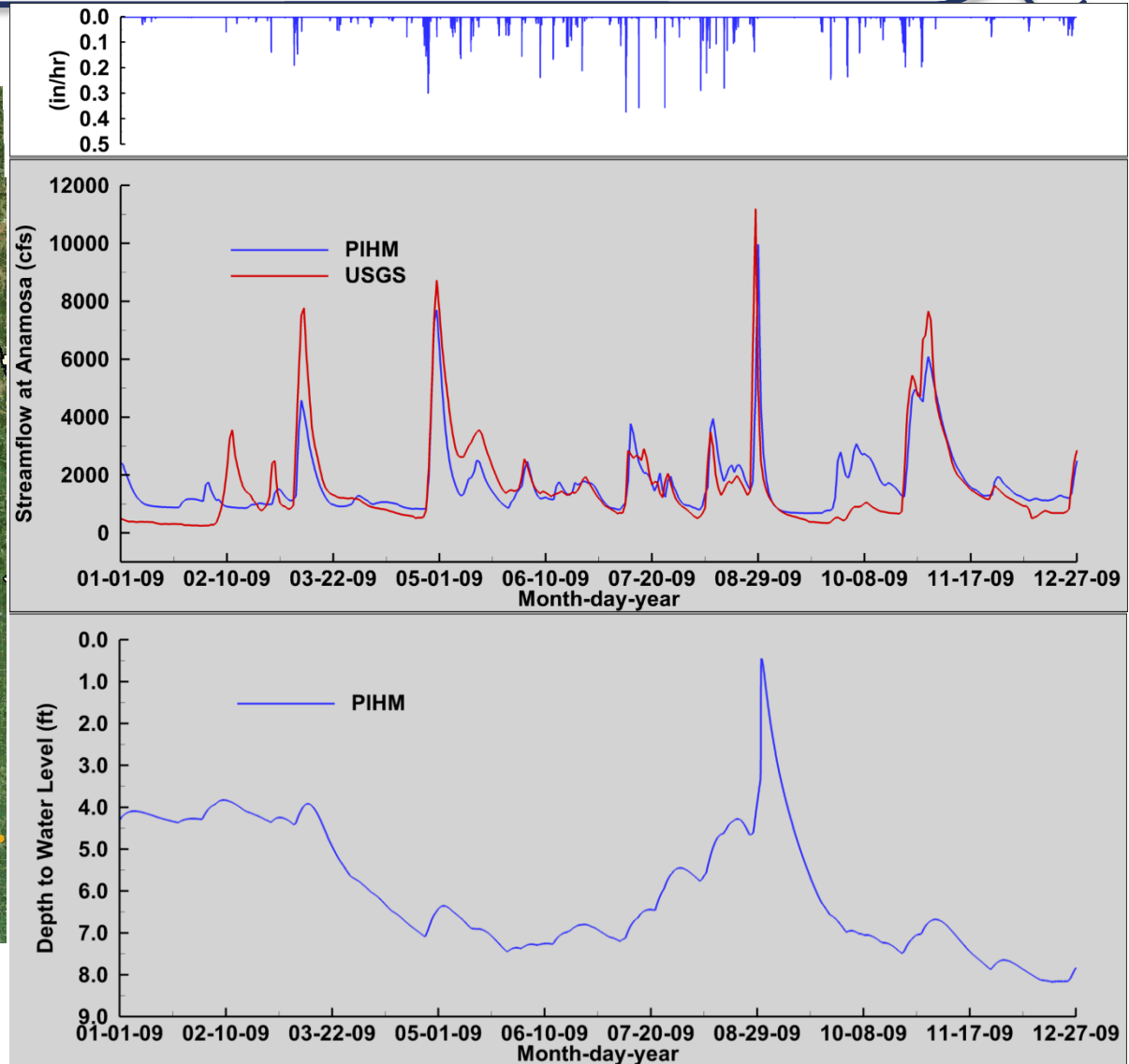
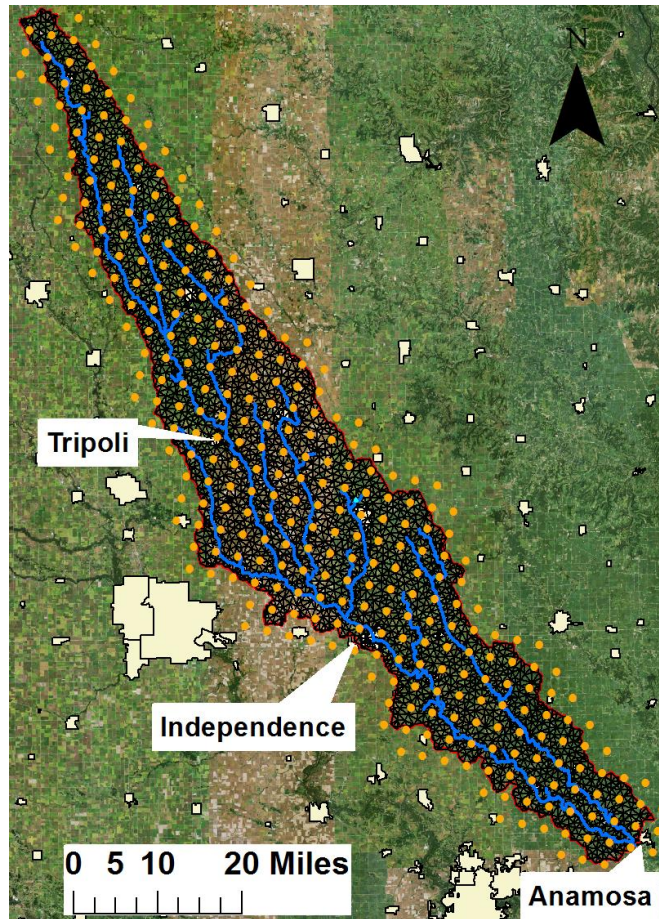
The Iowa Watershed Approach



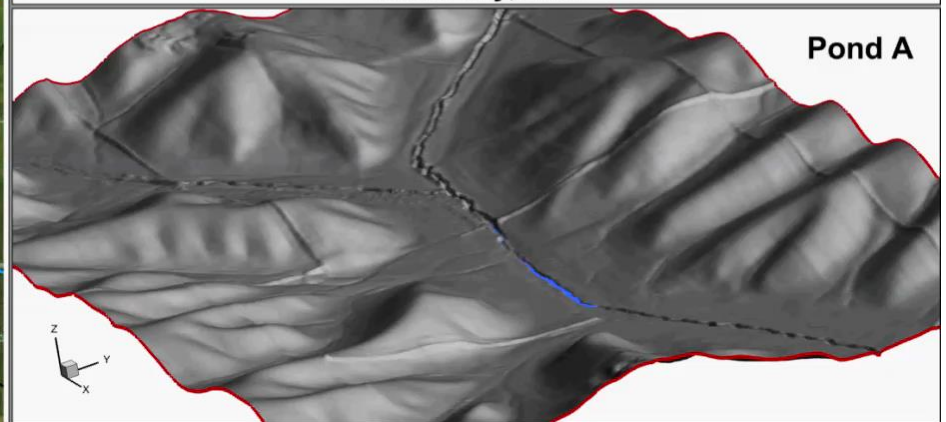
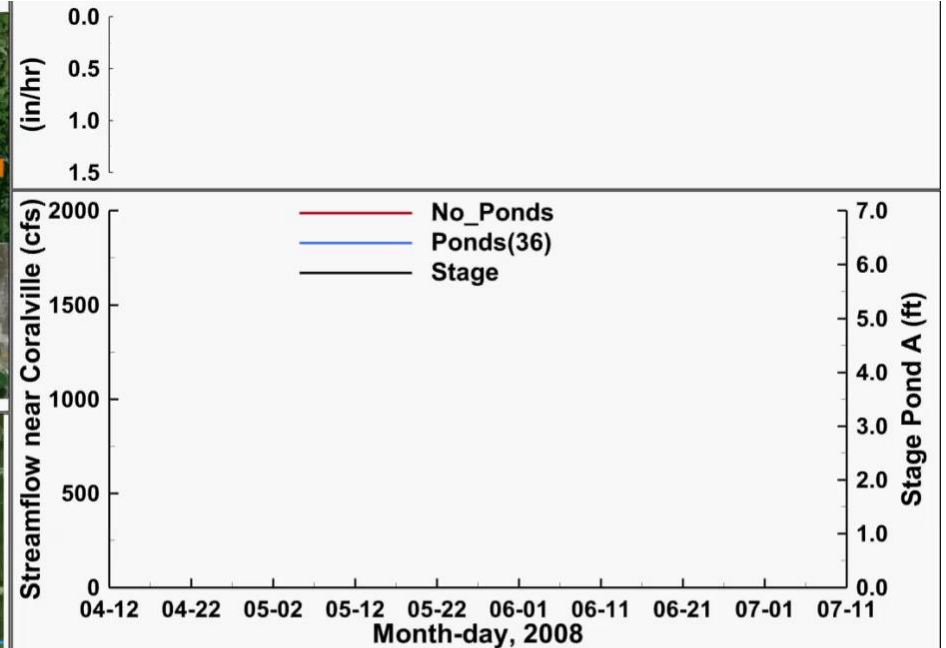
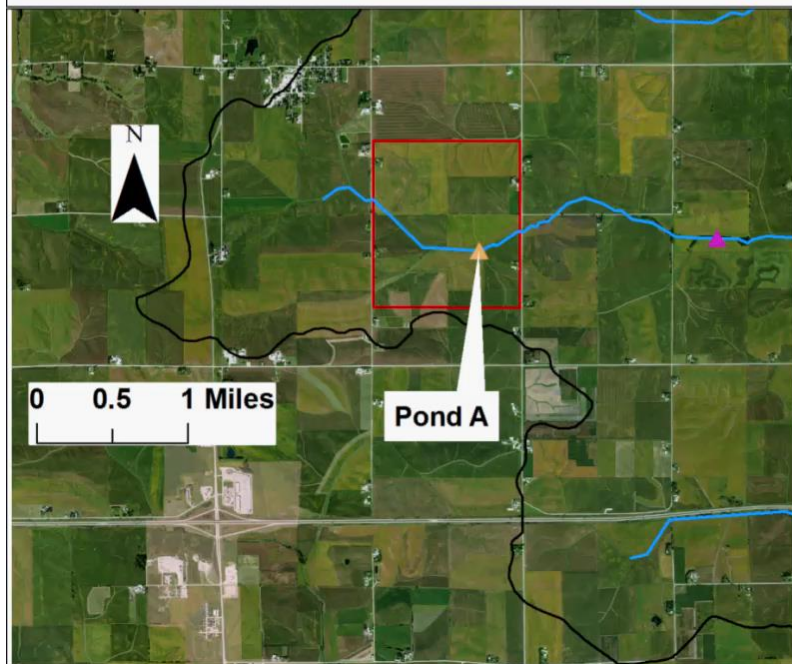
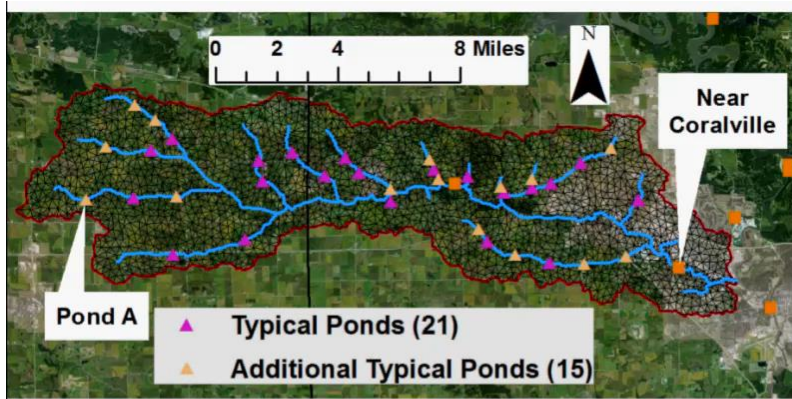
The Iowa Watershed Approach



The Iowa Watershed Approach



The Iowa Watershed Approach





A vision for a more resilient Iowa

The Iowa Watershed Approach

Iowa Flood Center
The University of Iowa
100 C. Maxwell Stanley Hydraulics Laboratory
Iowa City, IA 52242

319-384-1729

www.iowafloodcenter.org



A vision for a more resilient Iowa

The Iowa Watershed Approach

